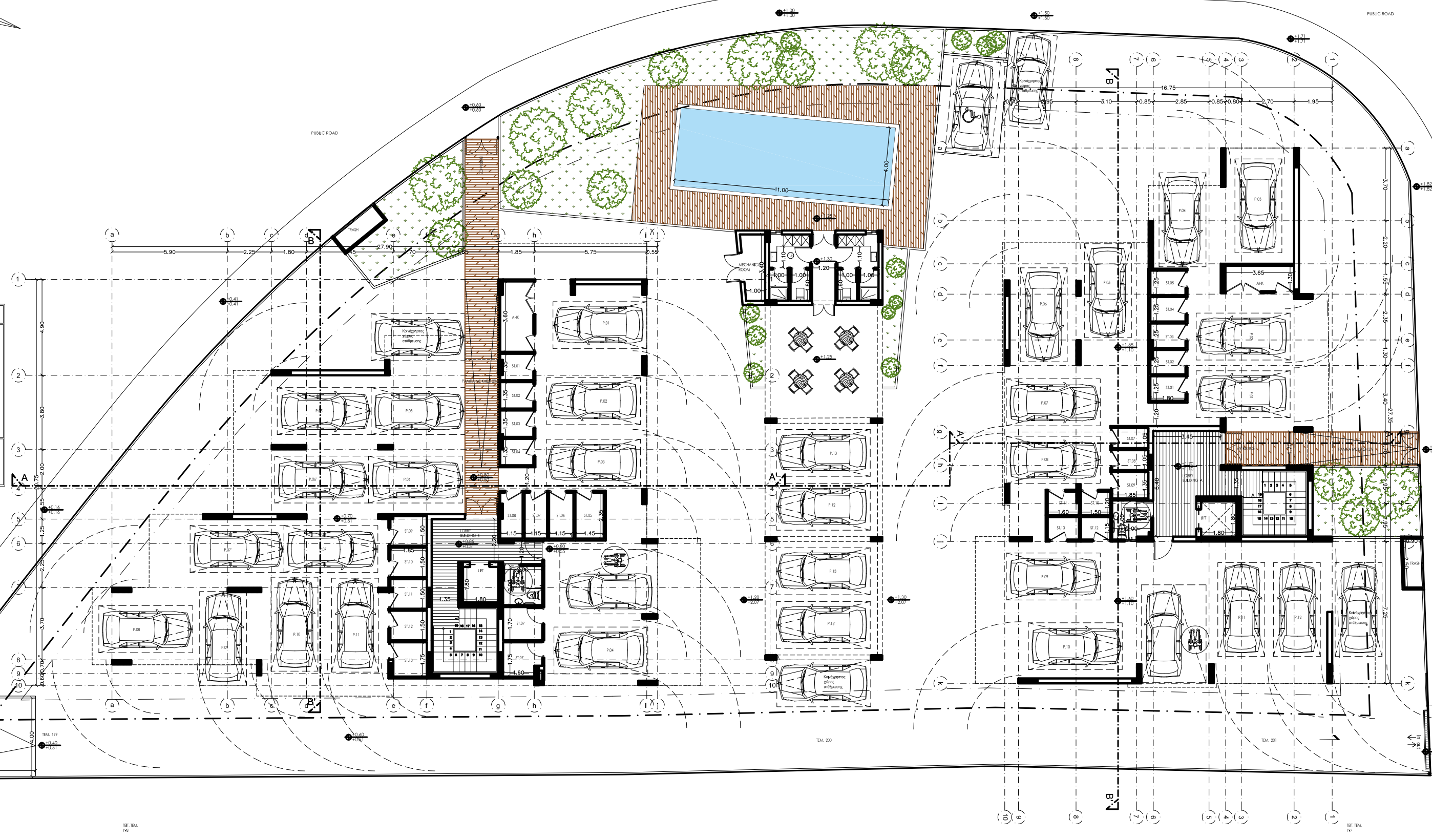


ΣΥΜΒΟΛΑ

- ΠΡΟΤΕΙΝΟΜΕΝΑ ΥΨΗ
- ΥΦΙΣΤΑΜΕΝΑ ΥΨΗ
- ΣΧΑΡΑ ΟΜΒΡΙΩΝ ΥΔΑΤΩΝ
- ΚΛΙΣΗ ΟΜΒΡΙΩΝ ΥΔΑΤΩΝ 1.5%
- BUILDING LINE

ΤΕΜΑΧΙΟ 1653 Φ/Σχ: 54/43
 ΟΛΙΚΟ ΕΜΒΑΔΟ ΤΕΜΑΧΙΟΥ = 1432 sqm
 - ΖΩΝΗ Καθ. ΚΑΛΥΨΗ 50% ΔΟΜΗΣΗ 90%
 = 716 sqm = 1288,8 sqm



Christoforos C. **Stylianides**
 & Partners

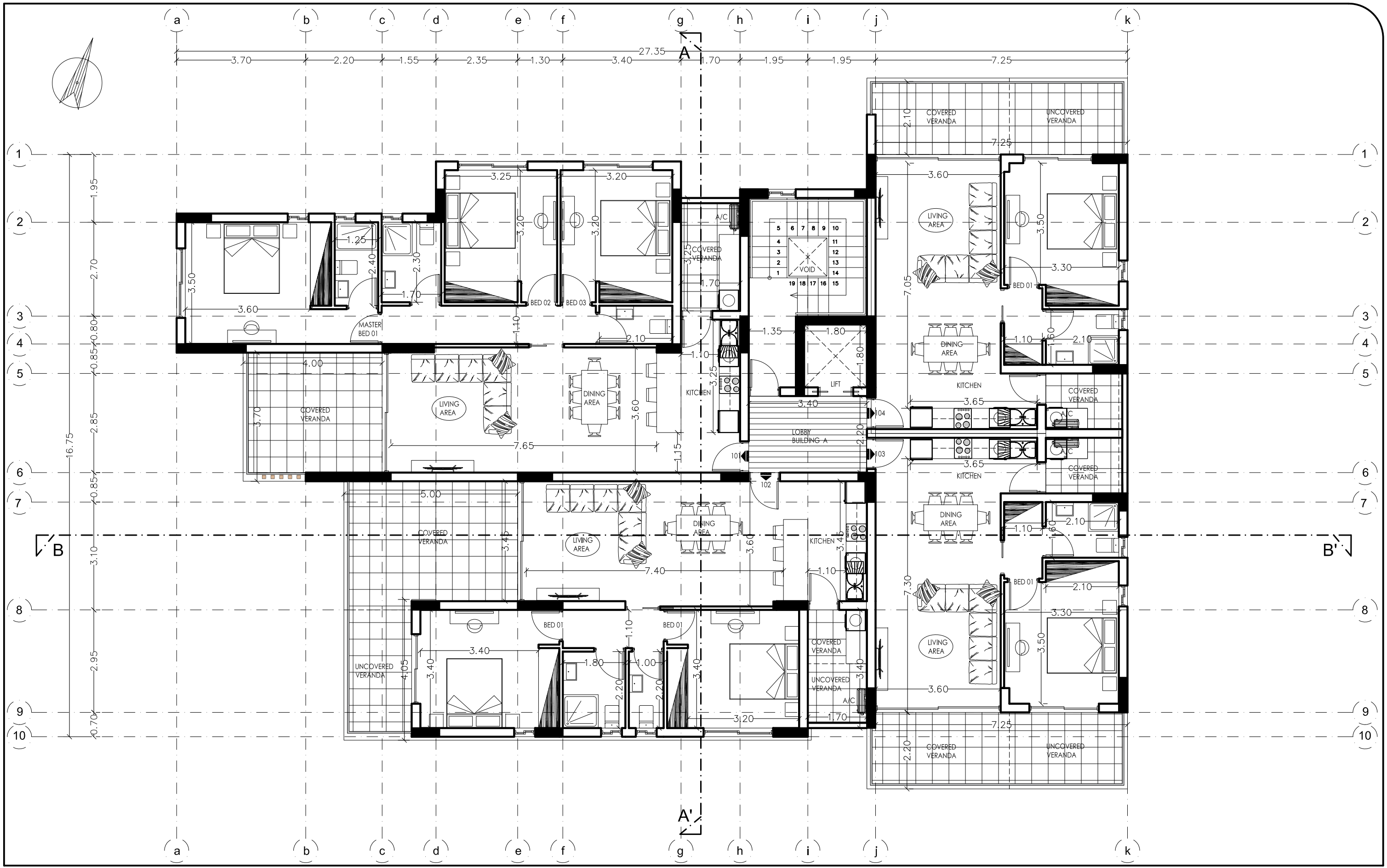
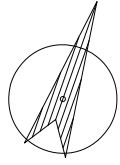
ARCHITECTS
 ENGINEERS
 CONSULTANTS

38 Spyrou Kyprlanou Avenue / CCS BLDG, 4154 Limassol - Cyprus
 Tel.: 25.73.51.31 - Fax.: 25.38.97.55 / Email: info@stylianidesgroup.com

Project No: Αρ. Εργασίας:	A2020-01-948
Dwg Stage:	Στάδιο μελέτης:
	1. Πλακόβηλη όδου
	2. Άδρα οικοδομής
	3. Τροποποιημένα σχέδια
	3. Κατασκευαστικά σχέδια

Owner - Ιδιοκτήτης:	PAN ASIA INVESTMENTS LTD
Position - Θέση:	ΑΓ. ΑΘΑΝΑΣΙΟΣ - ΛΕΜΕΣΟΣ
Signature - Υπογραφή:	

Signature Engineer	Designed by:	Date - Ημερομ.:	01 2020	Scale - Κλίμακα:	1 = 100
	Chris	Dwg Stage:	Στάδιο μελέτης:	Sheet No:	Αριθμός Σχεδίου:
CCS STYLIANIDES SERVICES LTD Christoforos C. Stylianides ETEK Reg. No. 75522 & Associates ARCHITECTS - ENGINEERS - CONSULTANTS			GROUND FLOOR BUILDING A & B		Αρ. 02
Sheet Title:	Τίτλος Σχεδίου:				



Christoforos C. **Stylianides**
& Partners

- ARCHITECTS
- ENGINEERS
- CONSULTANTS

38 Spyrou Kyprianou Avenue / CCS BLDG, Suite 301, 4154 Limassol - Cyprus
Tel : 25.73.51.31 - Fax.: 25.38.97.55 / Email : chr.stylianides@cytanet.com.cy

Project No.:
Ap. Epyrou: **A2020-01-948**

Signature
Engineer

CCS STYLIANIDES SERVICES LTD
Christoforos C. Stylianides
ETEK Reg. No. 75522 & Associates
ARCHITECTS - ENGINEERS - CONSULTANTS

Owner :
PAN ASIA INVESTMENTS LTD

Signature :

Date :
Ημερομ. :

01
2020

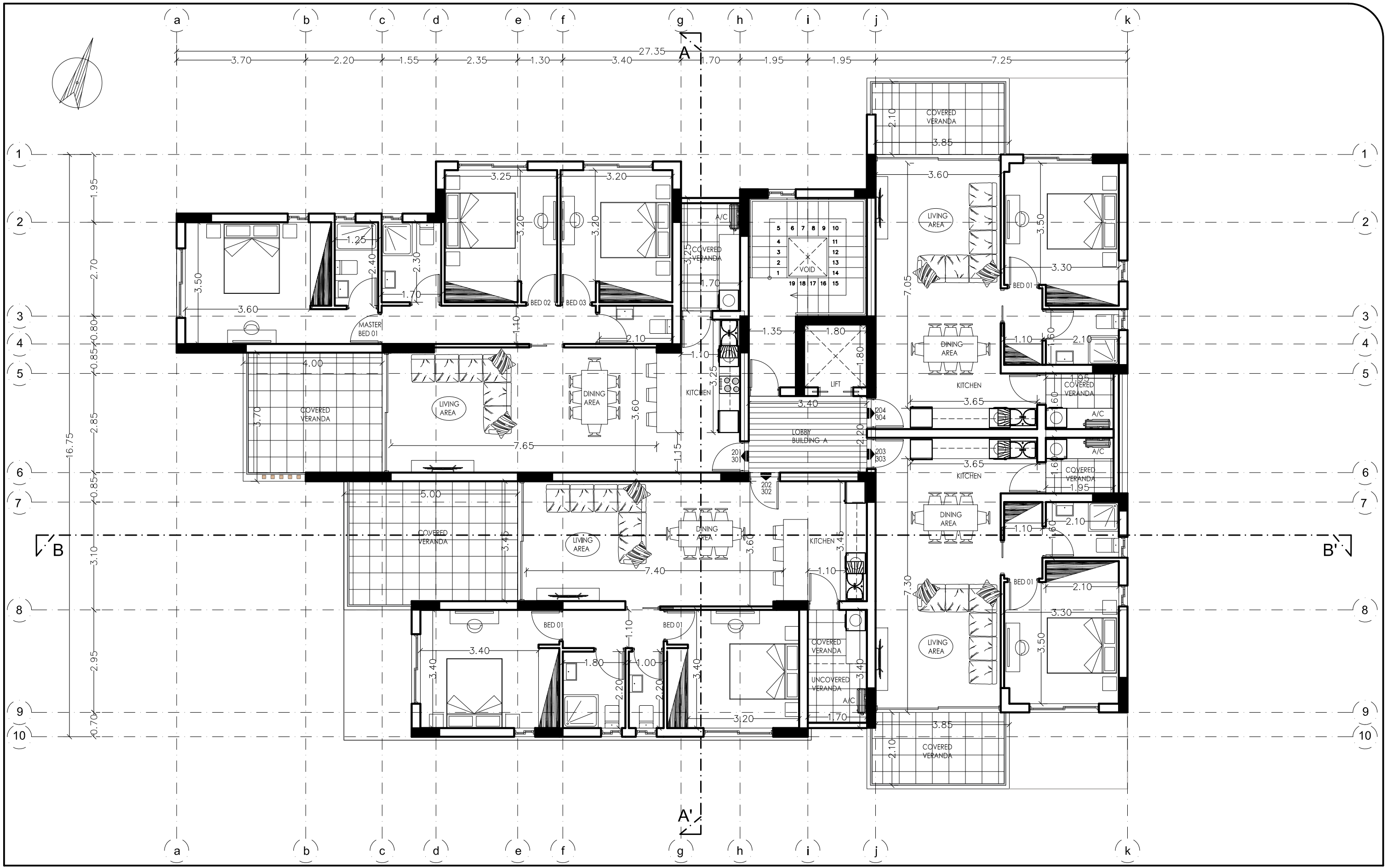
Project :
Dwg Title : **BUILDING A**
1st FLOOR

Position : **ΑΓ. ΑΘΑΝΑΣΙΟΣ - ΛΕΜΕΣΟΣ**

DWG No.
Ap. A03

Scale - Κλίμακα :

1:100



Christoforos C. Stylianides
& Partners

- ARCHITECTS
- ENGINEERS
- CONSULTANTS

38 Spyrou Kyprianou Avenue / CCS BLDG, Suite 301, 4154 Limassol - Cyprus
Tel : 25.73.51.31 - Fax.: 25.38.97.55 / Email : chr.stylianides@cytanet.com.cy

Project No.:
Αρ. Εργασίας: **A2020-01-948**

Signature
Engineer

CCS STYLIANIDES SERVICES LTD
Christoforos C. Stylianides
ΕΤΕΚ Reg. No. 75522 & Associates
ARCHITECTS - ENGINEERS - CONSULTANTS

Owner :
PAN ASIA INVESTMENTS LTD

Signature :

Date :
Ημερομ. :

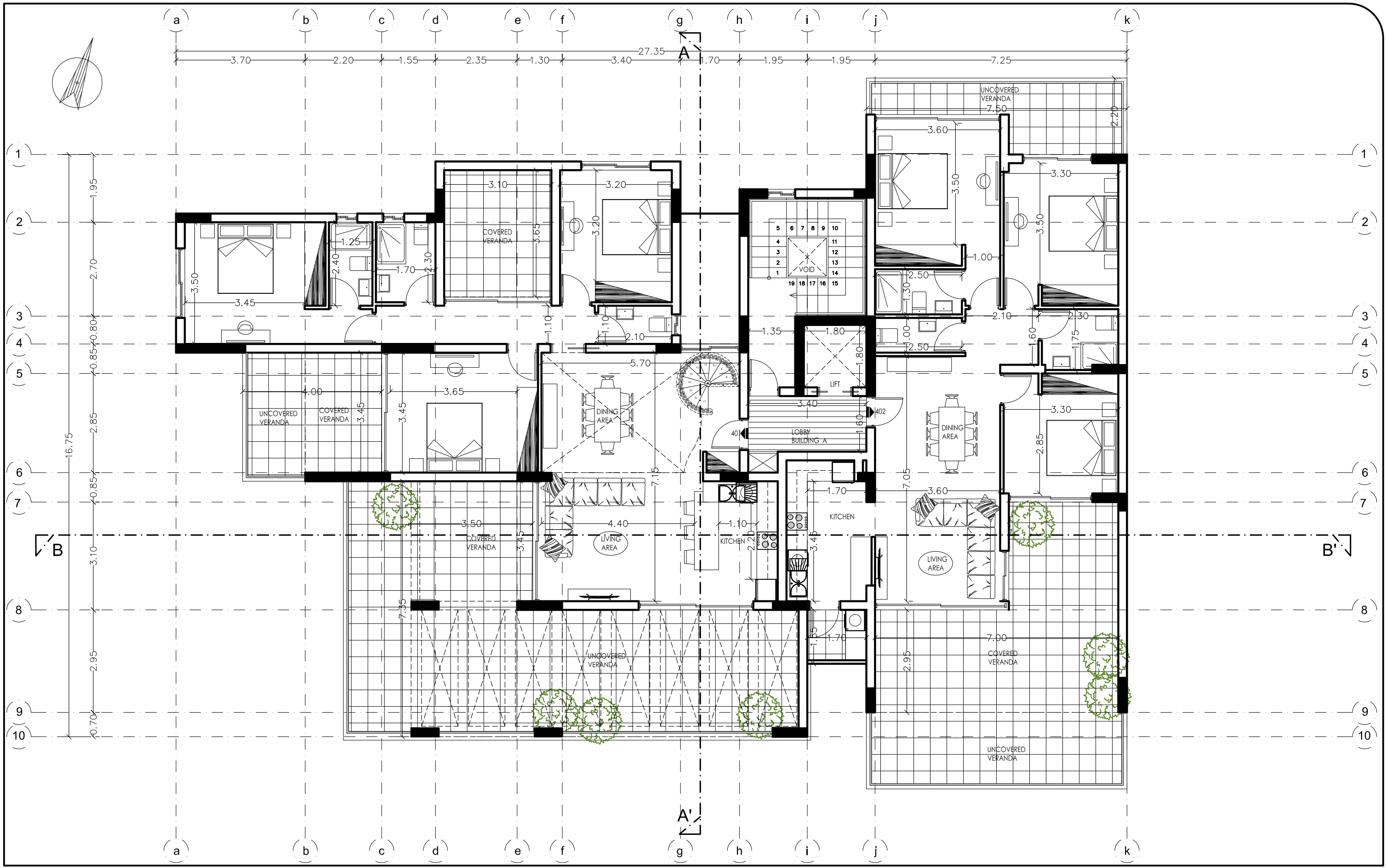
01
2020

Project :
Dwg Title : **BUILDING A**
2nd - 3rd FLOOR

Position : **ΑΓ. ΑΘΑΝΑΣΙΟΣ - ΛΕΜΕΣΟΣ**

DWG No.
Αρ. A04

Scale - Κλίμακα :
1:100



Christoforos C. Stylianides
& Partners

- ARCHITECTS
- ENGINEERS
- CONSULTANTS

38 Spyrou Kyprianou Avenue / CCS BLDG, Suite 301, 4154 Limassol - Cyprus
Tel : 25.73.51.31 - Fax.: 25.38.97.55 / Email : chr.stylianides@cytanet.com.cy

Project No.:
Αρ. Εργασίας: **A2020-01-948**

Signature
Engineer

CCS STYLIANIDES SERVICES LTD
Christoforos C. Stylianides
ΕΤΕΚ Reg. No. 75522 & Associates
ARCHITECTS - ENGINEERS - CONSULTANTS

Owner :
PAN ASIA INVESTMENTS LTD

Signature :

Date :
Ημερομ. :
01
2020

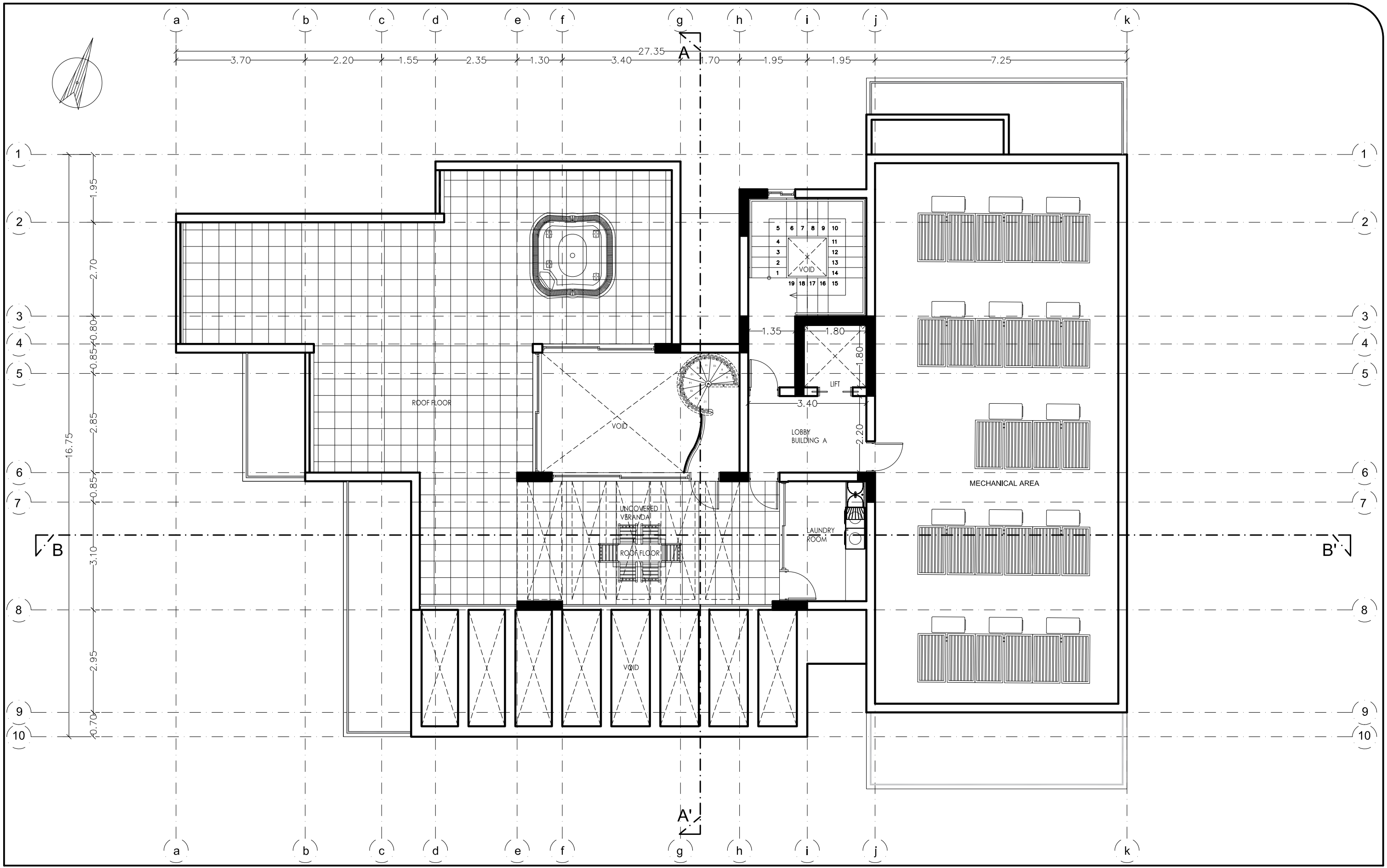
Project :
Dwg Title : **BUILDING A**
4th FLOOR

Position : **ΑΓ. ΑΘΑΝΑΣΙΟΣ - ΛΕΜΕΣΟΣ**

DWG No.
Αρ. A05

Scale - Κλίμακα :

1:100



Christoforos C. **Stylianides**

& Partners

- ARCHITECTS
- ENGINEERS
- CONSULTANTS

38 Spyrou Kyprianou Avenue / CCS BLDG, Suite 301, 4154 Limassol - Cyprus
 Tel : 25.73.51.31 - Fax.: 25.38.97.55 / Email : chr.stylianides@cytanet.com.cy

Project No.:
 Ap. Epyrou: **A2020-01-948**

Signature
 Engineer

CCS STYLIANIDES SERVICES LTD
 Christoforos C. Stylianides
 ETEK Reg. No. 75522 & Associates
 ARCHITECTS - ENGINEERS - CONSULTANTS

Owner :
PAN ASIA INVESTMENTS LTD

Signature :

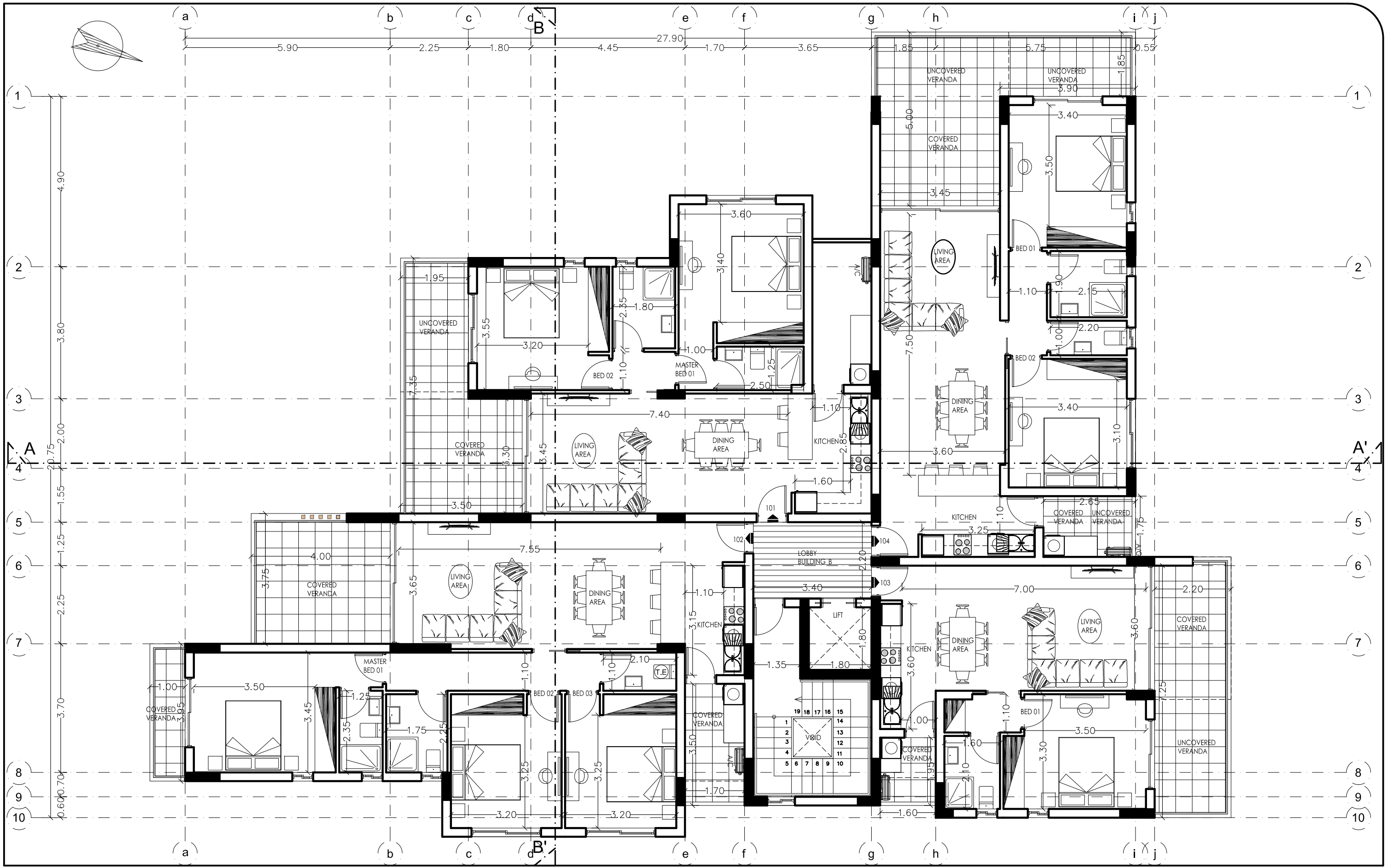
Date :
 Ημερομ. :
01
2020

Project :
 Dwg Title : **BUILDING A**
ROOF FLOOR

Position : **ΑΓ. ΑΘΑΝΑΣΙΟΣ - ΛΕΜΕΣΟΣ**

DWG No.
Ap. A06

Scale - Κλίμακα :
1:100



Christoforos C. Stylianides
& Partners

- ARCHITECTS
- ENGINEERS
- CONSULTANTS

38 Spyrou Kyprianou Avenue / CCS BLDG, Suite 301, 4154 Limassol - Cyprus
Tel : 25.73.51.31 - Fax.: 25.38.97.55 / Email : chr.stylianides@cytanet.com.cy

Project No.:
Ap. Epyrou: **A2020-01-948**

Signature
Engineer

CCS STYLIANIDES SERVICES LTD
Christoforos C. Stylianides
ETEK Reg. No. 75522 & Associates
ARCHITECTS - ENGINEERS - CONSULTANTS

Owner :
PAN ASIA INVESTMENTS LTD

Signature :

Date :
Ημερομ. :

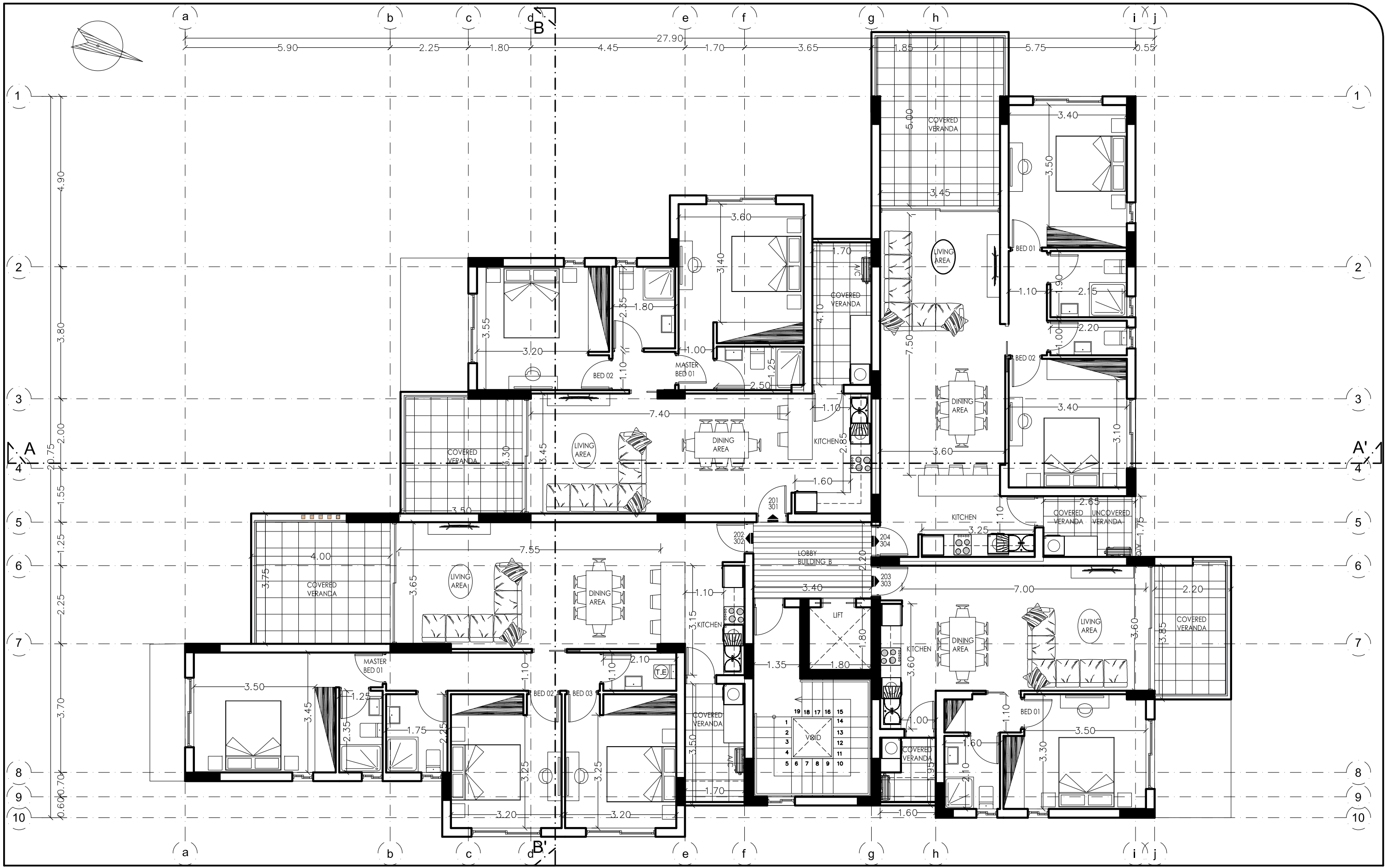
Project :
Dwg Title : **BUILDING B**
1st FLOOR

Position : **ΑΓ. ΑΘΑΝΑΣΙΟΣ - ΛΕΜΕΣΟΣ**

DWG No.
Ap. B16

Scale - Κλίμακα :

1:100



Christoforos C. Stylianides
& Partners

- ARCHITECTS
- ENGINEERS
- CONSULTANTS

38 Spyrou Kyprianou Avenue / CCS BLDG, Suite 301, 4154 Limassol - Cyprus
Tel : 25.73.51.31 - Fax.: 25.38.97.55 / Email : chr.stylianides@cytanet.com.cy

Project No.:
Ap. Epyrou: **A2020-01-948**

Signature
Engineer

CCS STYLIANIDES SERVICES LTD
Christoforos C. Stylianides
ETEK Reg. No. 75522 & Associates
ARCHITECTS - ENGINEERS - CONSULTANTS

Owner :
PAN ASIA INVESTMENTS LTD

Signature :

Date :
Ημερομ. :

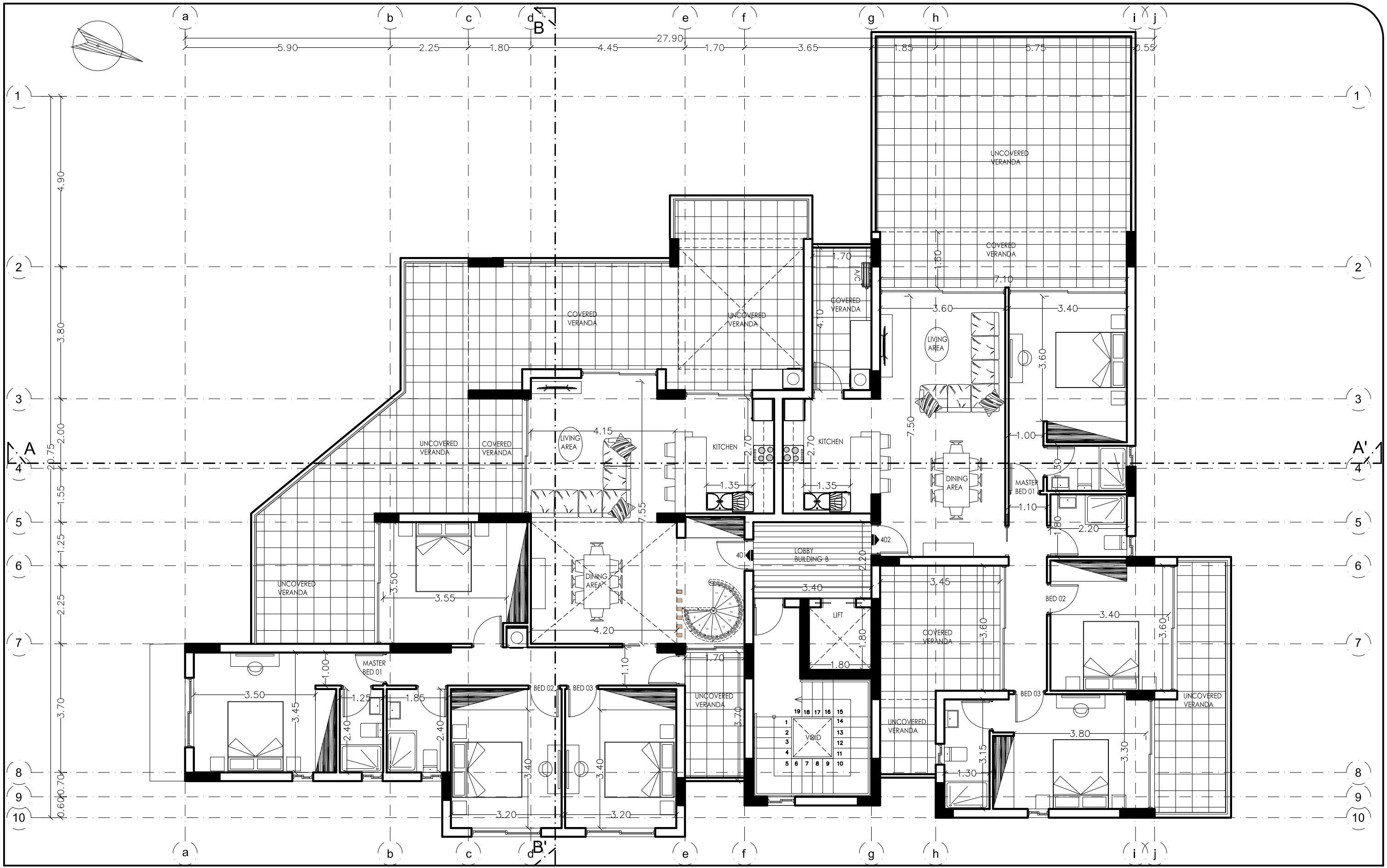
Project :
Dwg Title : **BUILDING B**
2nd - 3rd FLOOR

Position : **ΑΓ. ΑΘΑΝΑΣΙΟΣ - ΛΕΜΕΣΟΣ**

DWG No.
Ap. B17

Scale - Κλίμακα :

1:100



Christoforos C. **Stylianides**

& Partners

- ARCHITECTS
- ENGINEERS
- CONSULTANTS

38 Spyrou Kyprianou Avenue / CCS BLDG, Suite 301, 4154 Limassol - Cyprus
 Tel : 25.73.51.31 - Fax.: 25.38.97.55 / Email : chr.stylianides@cytanet.com.cy

Project No:
 Ap. Epyrou:
A2020-01-948

Signature
 Engineer

CCS STYLIANIDES
 SERVICES LTD
 Christoforos C. Stylianides
 ETEK Reg. No. 75522 & Associates
 ARCHITECTS - ENGINEERS - CONSULTANTS

Owner :
PAN ASIA INVESTMENTS LTD

Signature :

Date :
 Ημερομ. :

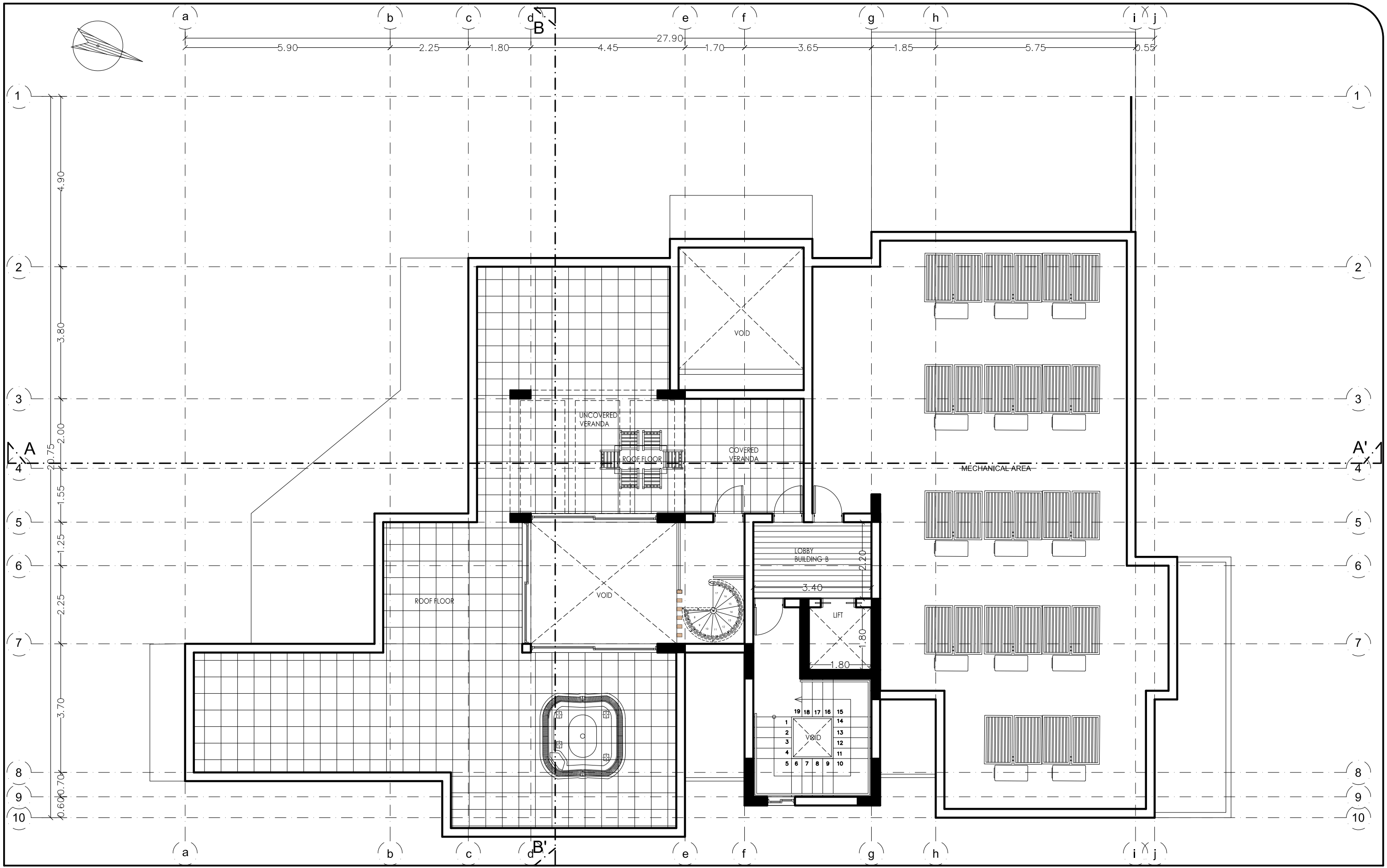
Project :
 Dwg Title : **BUILDING B**
4 th FLOOR

Position : **ΑΓ. ΑΘΑΝΑΣΙΟΣ - ΛΕΜΕΣΟΣ**

DWG No.
Ap. B18

Scale - Κλίμακα :

1:100



Christoforos C. **Stylianides**

& Partners

- ARCHITECTS
- ENGINEERS
- CONSULTANTS

38 Spyrou Kyprianou Avenue / CCS BLDG, Suite 301, 4154 Limassol - Cyprus
 Tel : 25.73.51.31 - Fax.: 25.38.97.55 / Email : chr.stylianides@cytanet.com.cy

Project No.:
 Ap. Epyrhoi:
A2020-01-948

Signature
 Engineer

CCS STYLIANIDES
 SERVICES LTD
 Christoforos C. Stylianides
 ETEK Reg. No. 75522 & Associates
 ARCHITECTS - ENGINEERS - CONSULTANTS

Owner :
PAN ASIA INVESTMENTS LTD

Signature :

Date :
 Ημερομ. :

Project :
 Dwg Title : **BUILDING B**
ROOF FLOOR

Position : **ΑΓ. ΑΘΑΝΑΣΙΟΣ - ΛΕΜΕΣΟΣ**

DWG No.
Ap. B19

Scale - Κλίμακα :

1:100