



HARMONY
VILLAS

Welcome

Harmony Villas is a beautiful residential development on the outskirts of Limassol, offering stunning 3-bedroom villas, with provision for an extra bedroom.

The design of the villas has been inspired by Mediterranean architecture and they are built in large plots with the option of your own private swimming pool and barbecue area.

HARMONY
VILLAS





13 VILLAS.
3+ BEDROOMS

Secluded Bliss

Rural Retreat Near Limassol's Bustling Heart

Set in a peaceful environment amongst pine trees and overlooking the Akrotiri Coast line, its rural location ensures tranquillity and privacy, yet it's just a 20-minute drive from the cosmopolitan city centre of Limassol.

HARMONY
VILLAS





PLACES OF INTEREST

- Limassol City Centre
20min. drive
- MyMall Limassol
15min. drive
- Lady's Mile Beach
15min. drive
- General Hospital
10min. drive
- Casino
15min. drive
- Kourion Beach
15min. drive



INTERNATIONAL SCHOOLS

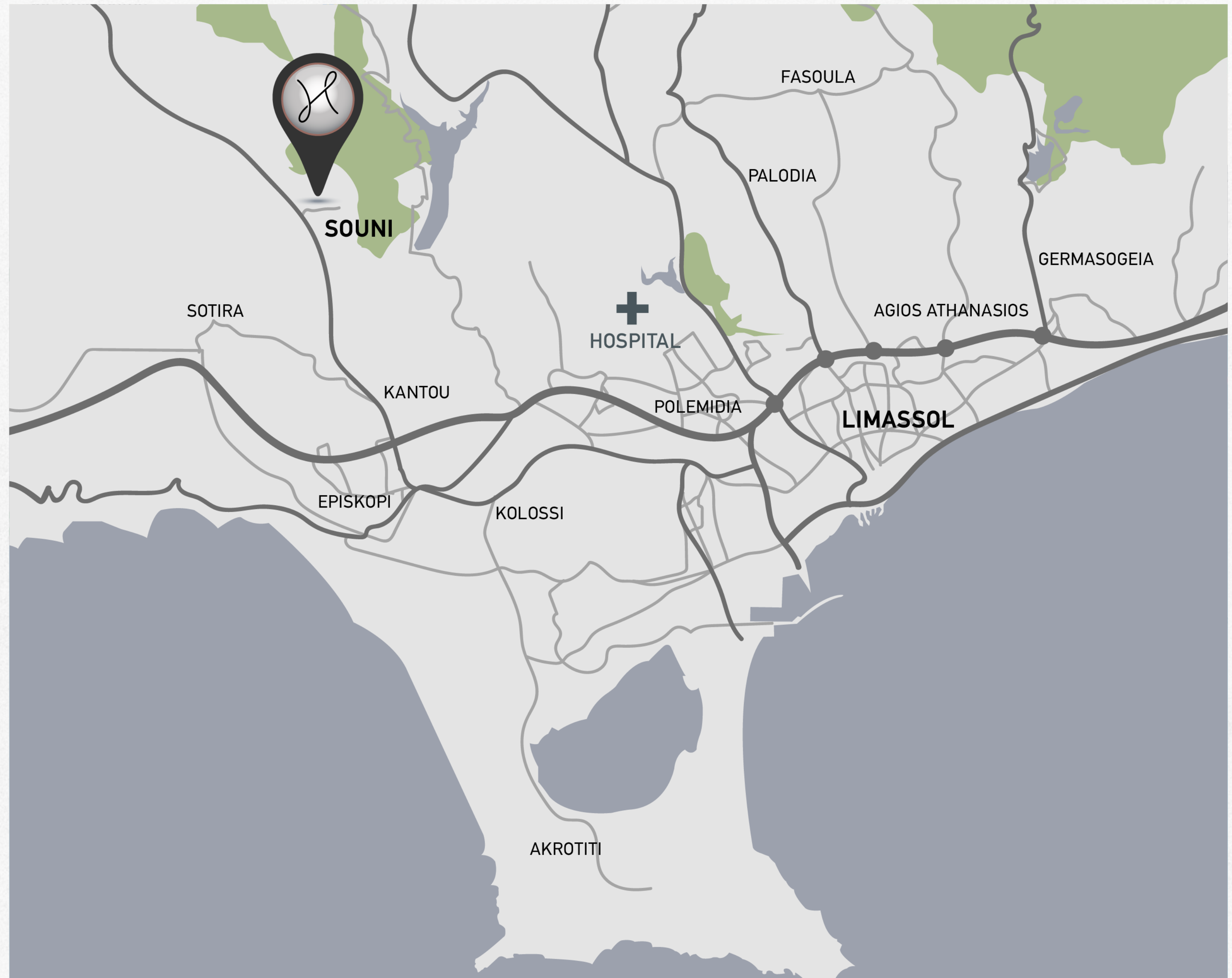
- Heritage Private School
English-speaking
20min. drive
- Island Private School
English-speaking
20min. drive
- Foley's Private School
English-speaking
25min. drive
- Trinity Private School
Russian-speaking
25min. drive



AIRPORTS

- Paphos Airport
20min. drive
- Larnaca Airport
40min. drive

HARMONY
WILLAS



Unveiling Souni

A Tapestry of Trails, Wine & Cyprus Charm

Traverse Tranquility

Discover the breathtaking surrounds of Souni, where enchanting trails await to unveil panoramic views of the picturesque landscape. Embark on a serene stroll or elevate your adventure with invigorating hikes through the pristine surroundings.

Sip and Savor

Acclaimed wineries beckon with captivating tours and tastings. Immerse yourself in the artistry of wine-making as you sample the finest blends amidst the tranquil ambience of the serene surroundings.

Journey Beyond

Unveil the charm of nearby Cyprus villages, just a stone's throw away from Souni. Lose yourself in the enchanting cobblestone pathways, marvel at the timeless architecture, and savor the flavors of authentic local cuisine.



The Amenities

Comfort, Security & Sustainability

Each villa is equipped with state-of-the-art amenities, including a cutting-edge photovoltaic system harnessing renewable energy to power your home sustainably. Indulge in culinary delights within our high-quality kitchens, outfitted with top-of-the-line appliances, complemented by meticulously crafted wardrobes for effortless organization. Experience ultimate comfort with central floor heating, ensuring warmth and coziness throughout the seasons. Moreover, your safety is our priority, with every villa secured by a robust security door, granting you peace of mind.

- 3KVA Photovoltaic System
- Granite Worktops
- Solar Water Heating
- Marble Stairs
- Pressurized Water System
- Pipe in Pipe Plumbing System
- Central Floor Heating
- Fly Screens on Windows
- Security Door
- Video Entry System
- Double Glazed Windows & Patio Doors
- Decorative Ceilings With Hidden Lighting
- Landscaped Gardens With Automatic Irrigation System
- Top Quality Designer Kitchens & Wardrobes

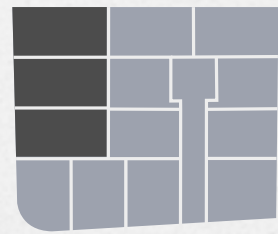


Site Plan

The diversity of Harmony Villas offers something for every taste. With a range of sizes and layouts, from cozy one-floor villas to grand two-floor estates, our community welcomes all seeking their perfect home.

Villa No.	Plot Size	Covered Area	Floors	Swimming Pool
1.	457m ²	214m ²	2	Included
2.	457m ²	214m ²	2	Optional
3.	457m ²	214m ²	2	Optional
4.	363m ²	120m ²	1	Optional
5.	363m ²	120m ²	1	Included
6.	363m ²	120m ²	1	Optional
7.	345m ²	163m ²	2	Optional
8.	319m ²	163m ²	2	Optional
9.	407m ²	194m ²	2	Optional
10.	408m ²	194m ²	2	Included
11.	314m ²	163m ²	2	Optional
12.	345m ²	163m ²	2	Included
13.	420m ²	115m ²	1	Included

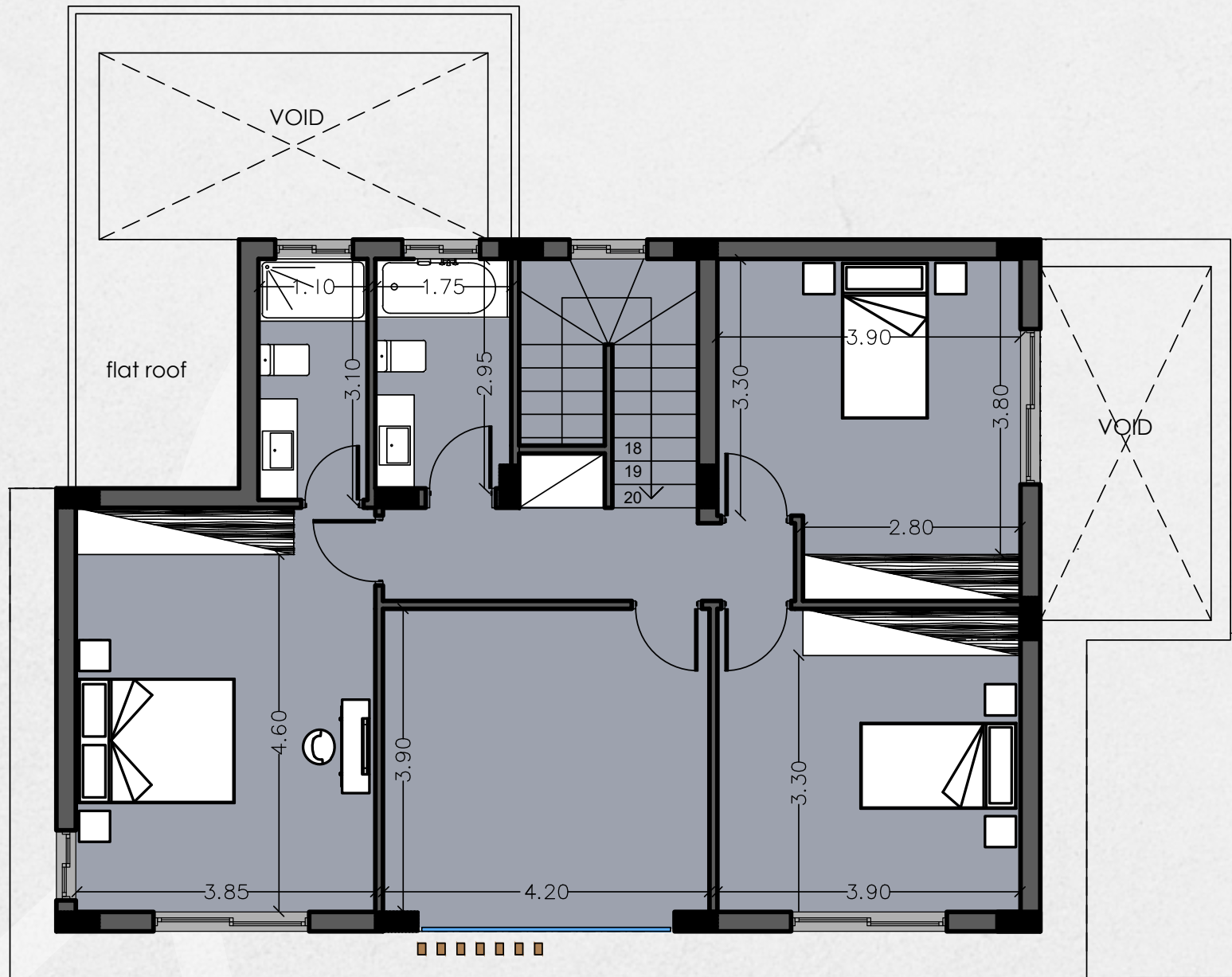
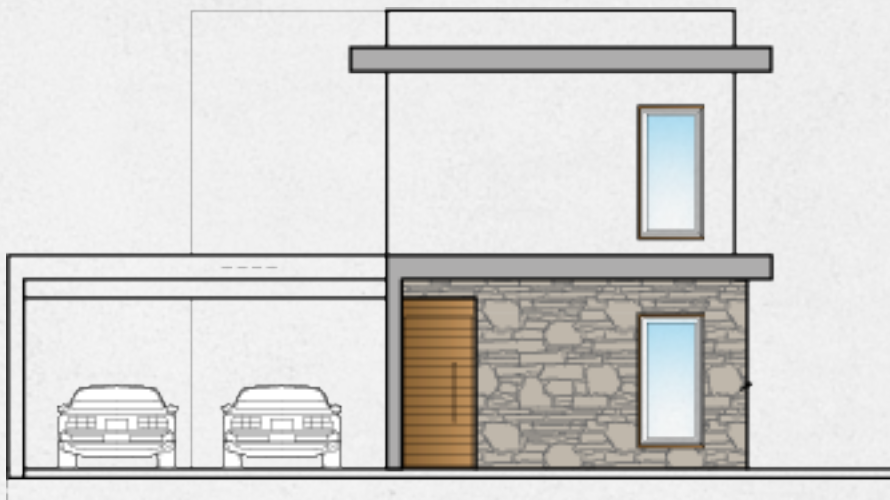




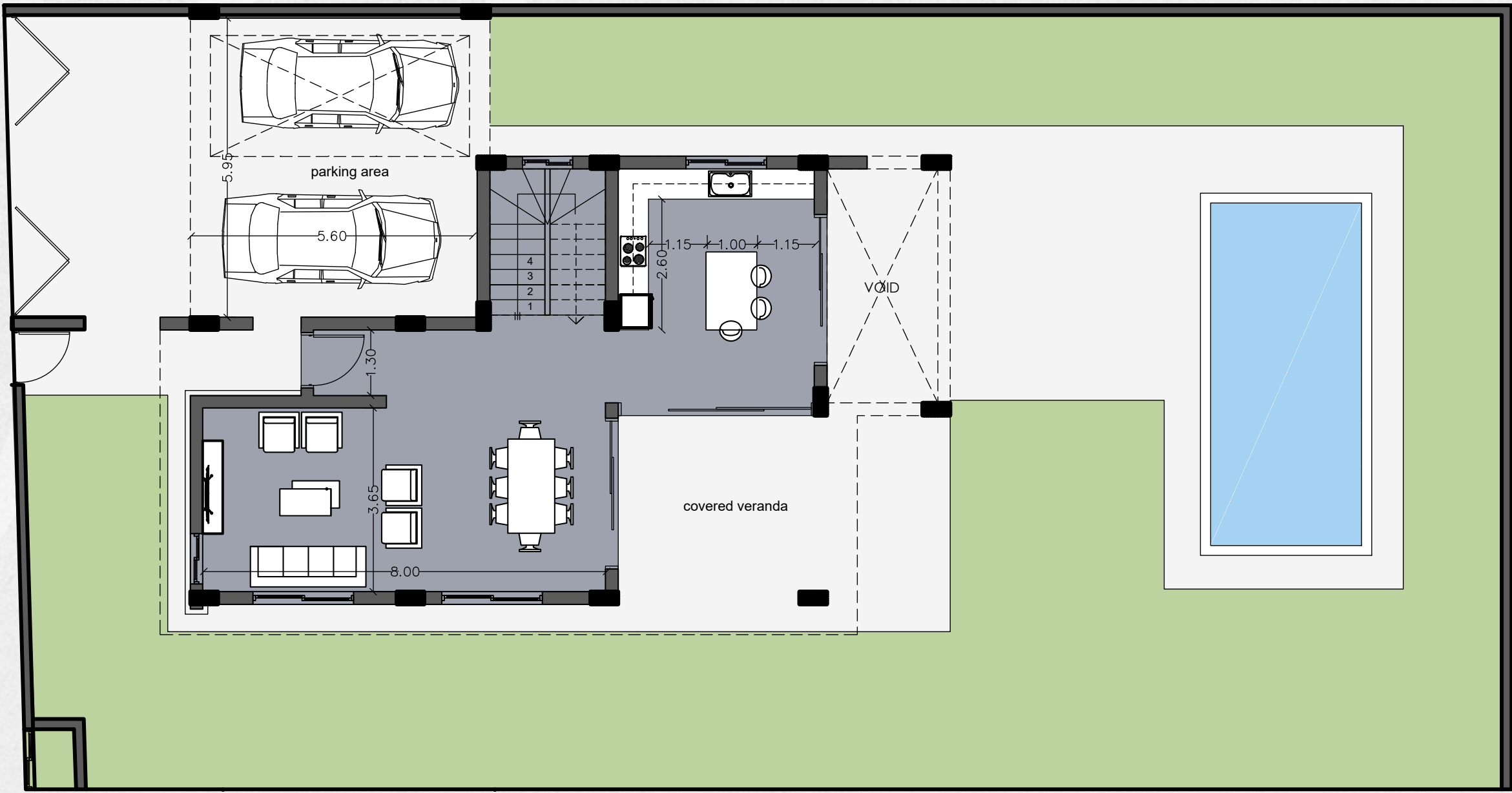
House Plan

VILLAS 1, 2 & 3

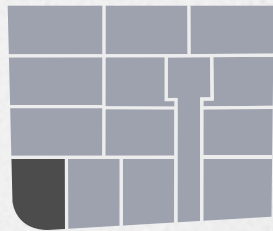
Plot Size	457m ²
Bedrooms	3+
Bathrooms	2
Internal Covered Area	164m ²
Covered Veranda	32m ²
Un-covered Veranda	12m ²
Covered Parking	18m ²
Swimming Pool	V.1 Yes, V.2 & V.3 Opt.
Total Covered Area	214m ²



Upper Floor



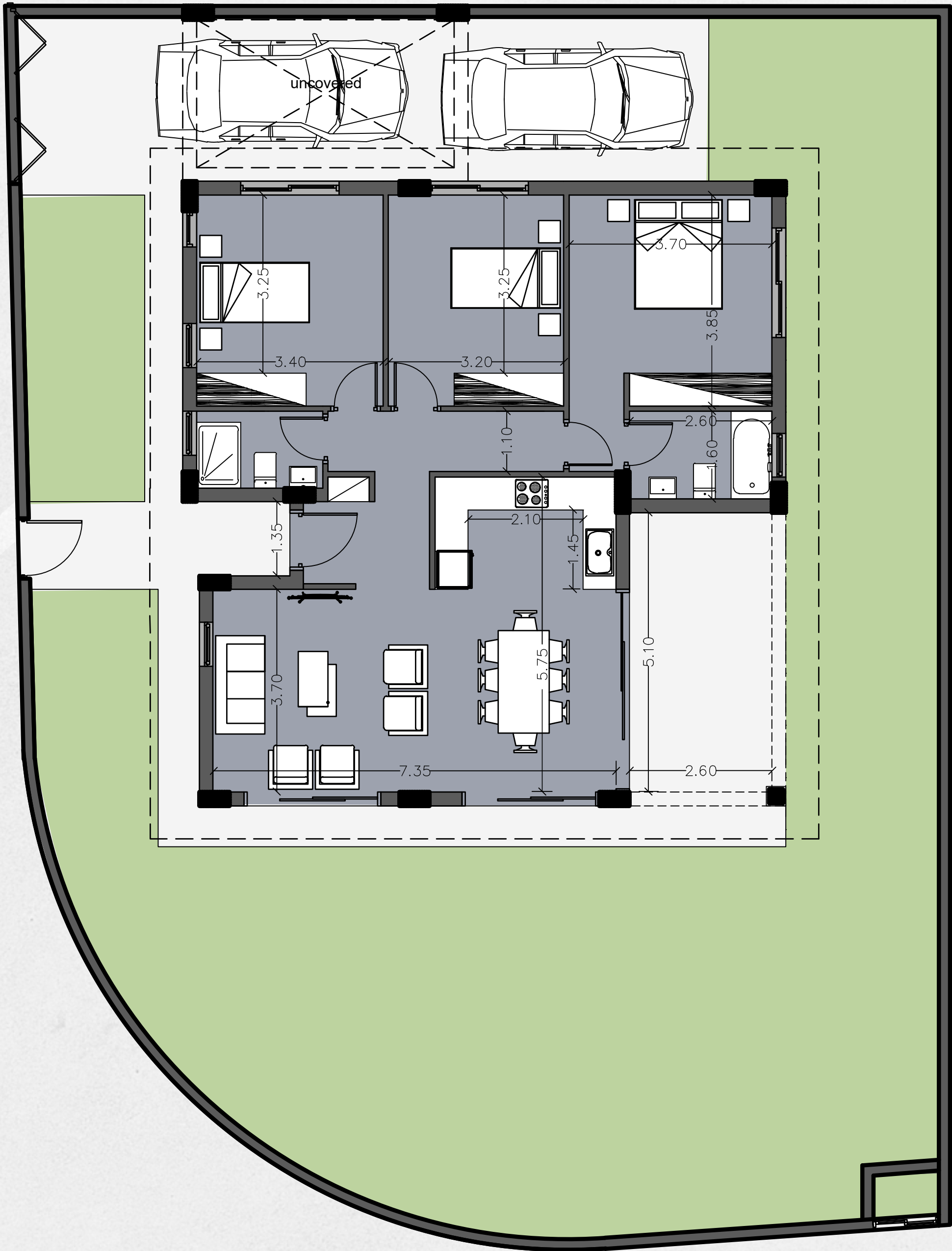
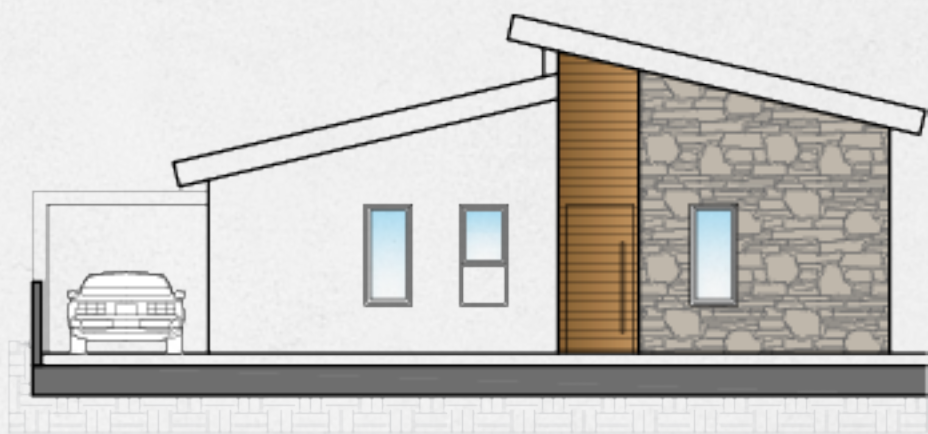
Ground Floor

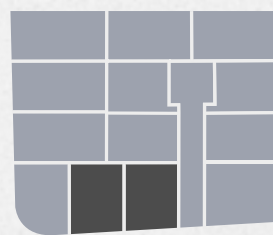


House Plan

VILLA 4

Plot Size	363m ²
Bedrooms	3
Bathrooms	2
Internal Covered Area	105m ²
Covered Veranda	15m ²
Un-covered Veranda	-
Covered Parking	-
Swimming Pool	Optional
Total Covered Area	120m ²

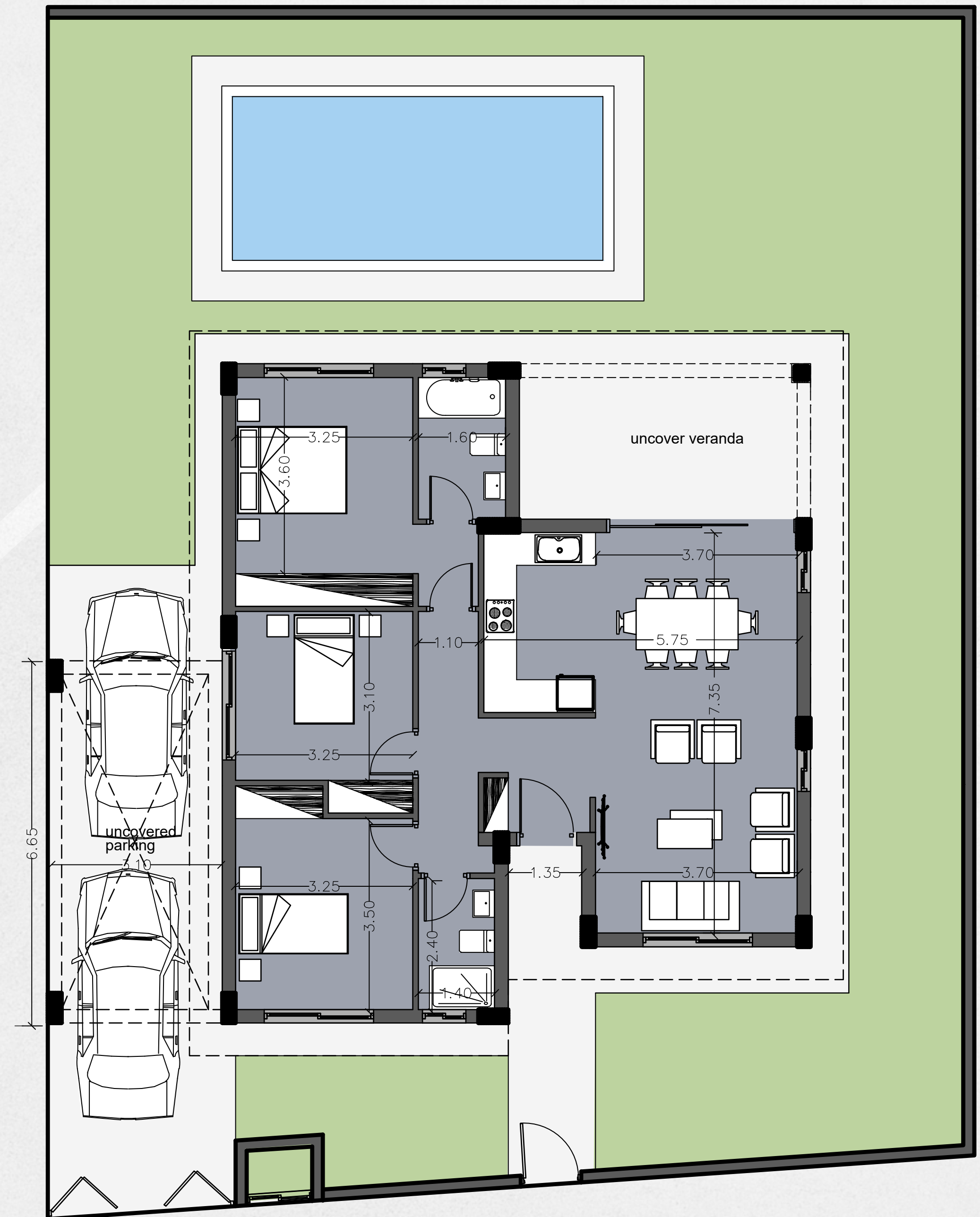
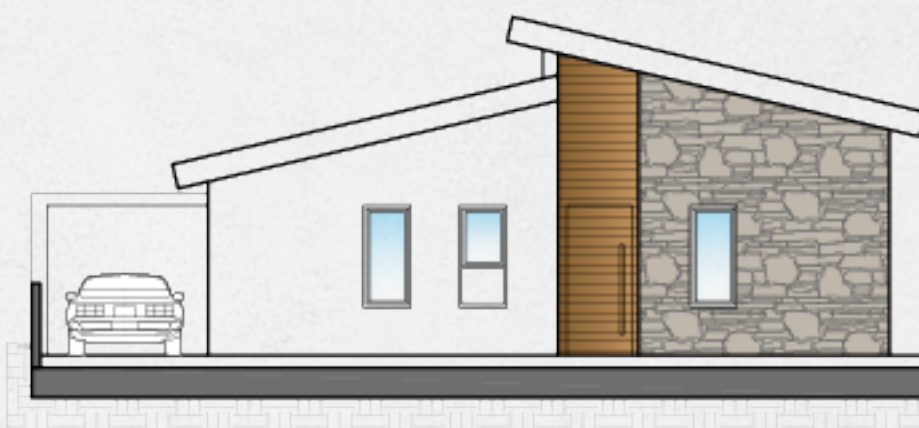


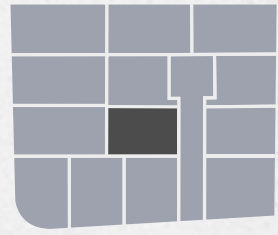


House Plan

VILLAS 5 & 6

Plot Size	363m ²
Bedrooms	3
Bathrooms	2
Internal Covered Area	105m ²
Covered Veranda	15m ²
Un-covered Veranda	-
Covered Parking	-
Swimming Pool	V.5 Yes, V.6 Opt.
Total Covered Area	120m ²

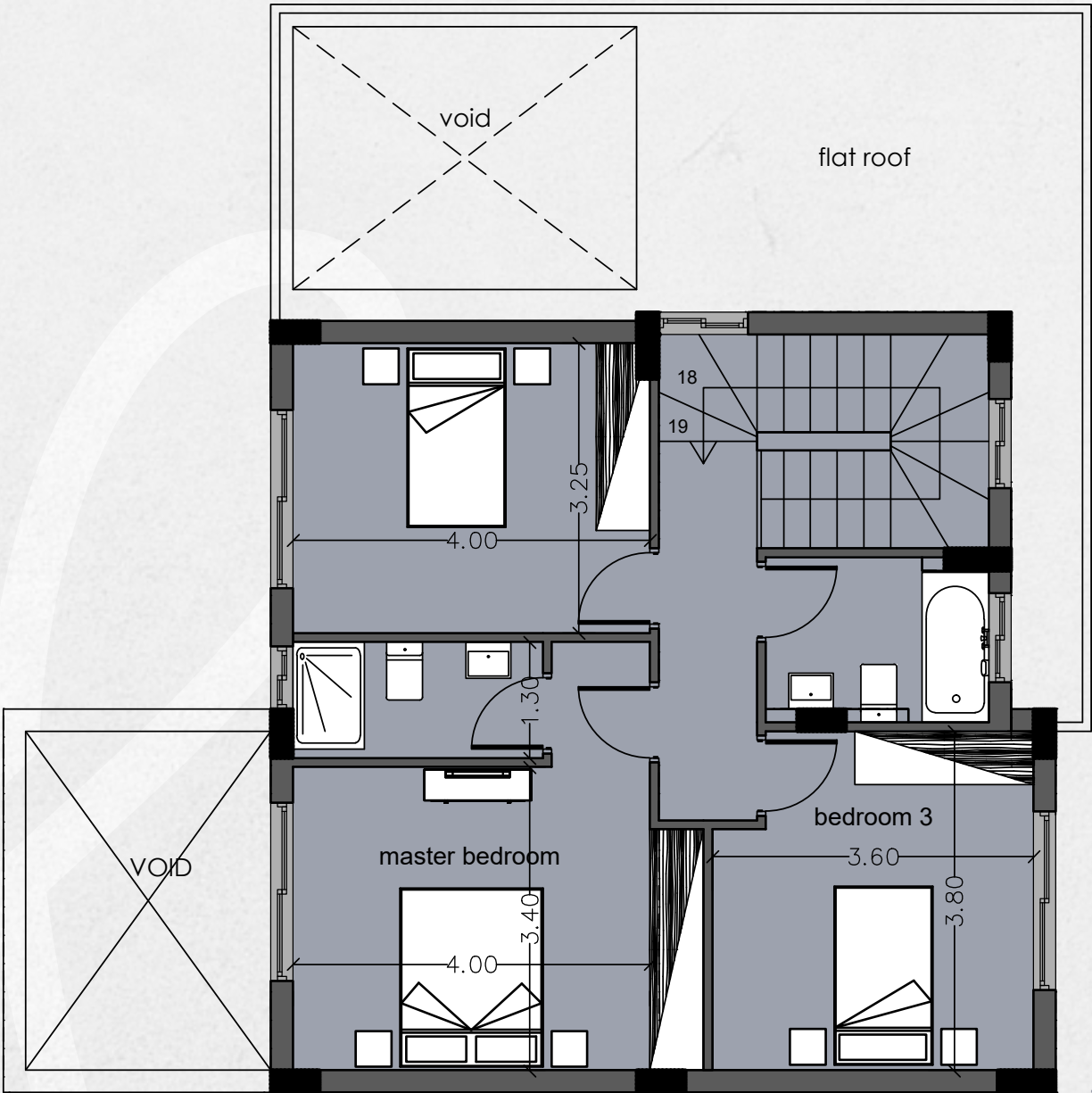




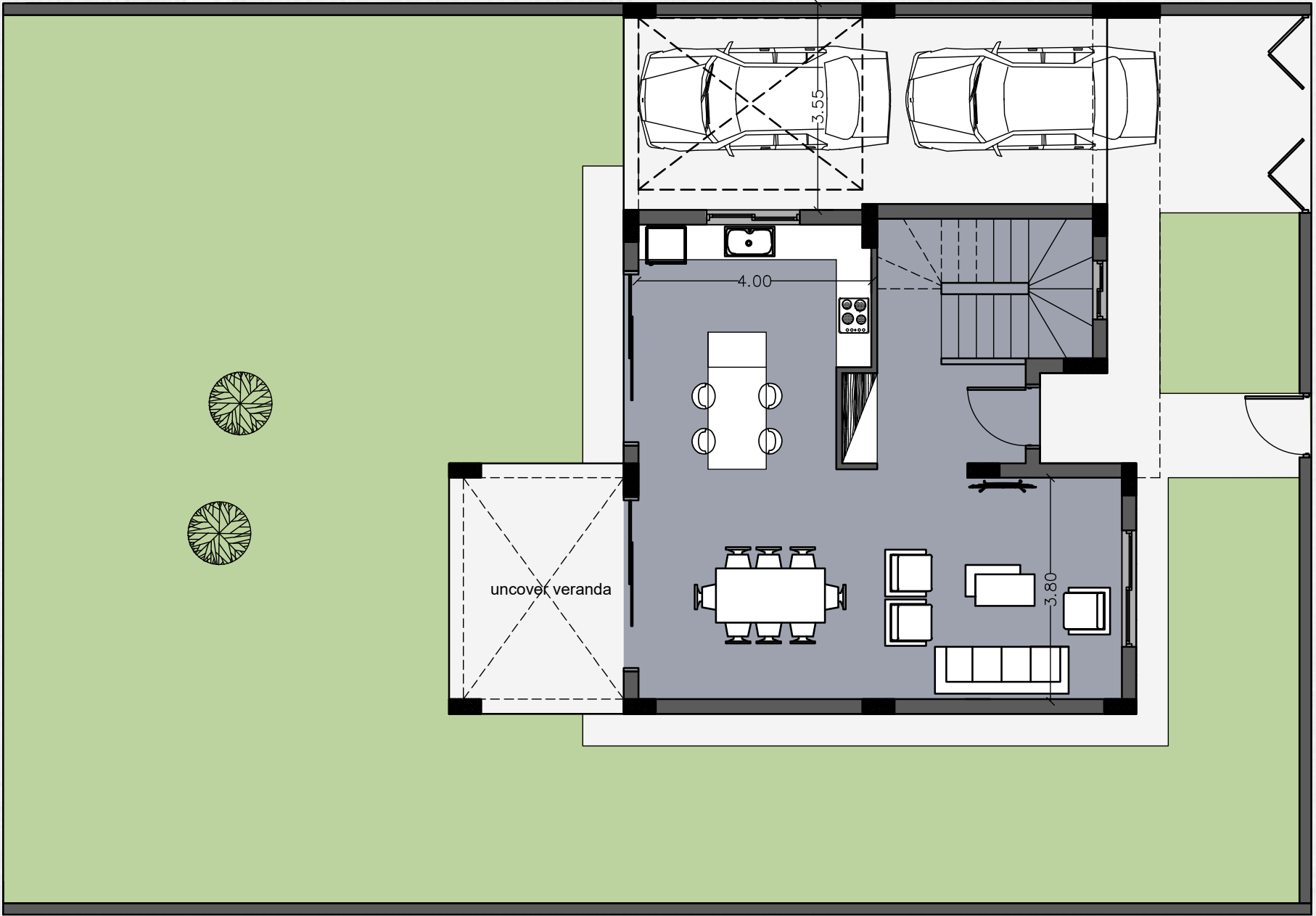
House Plan

VILLA 7

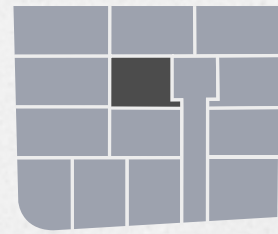
Plot Size	345m ²
Bedrooms	3
Bathrooms	2
Internal Covered Area	147m ²
Covered Veranda	-
Un-covered Veranda	12m ²
Covered Parking	16m ²
Swimming Pool	Optional
Total Covered Area	163m²



Upper Floor



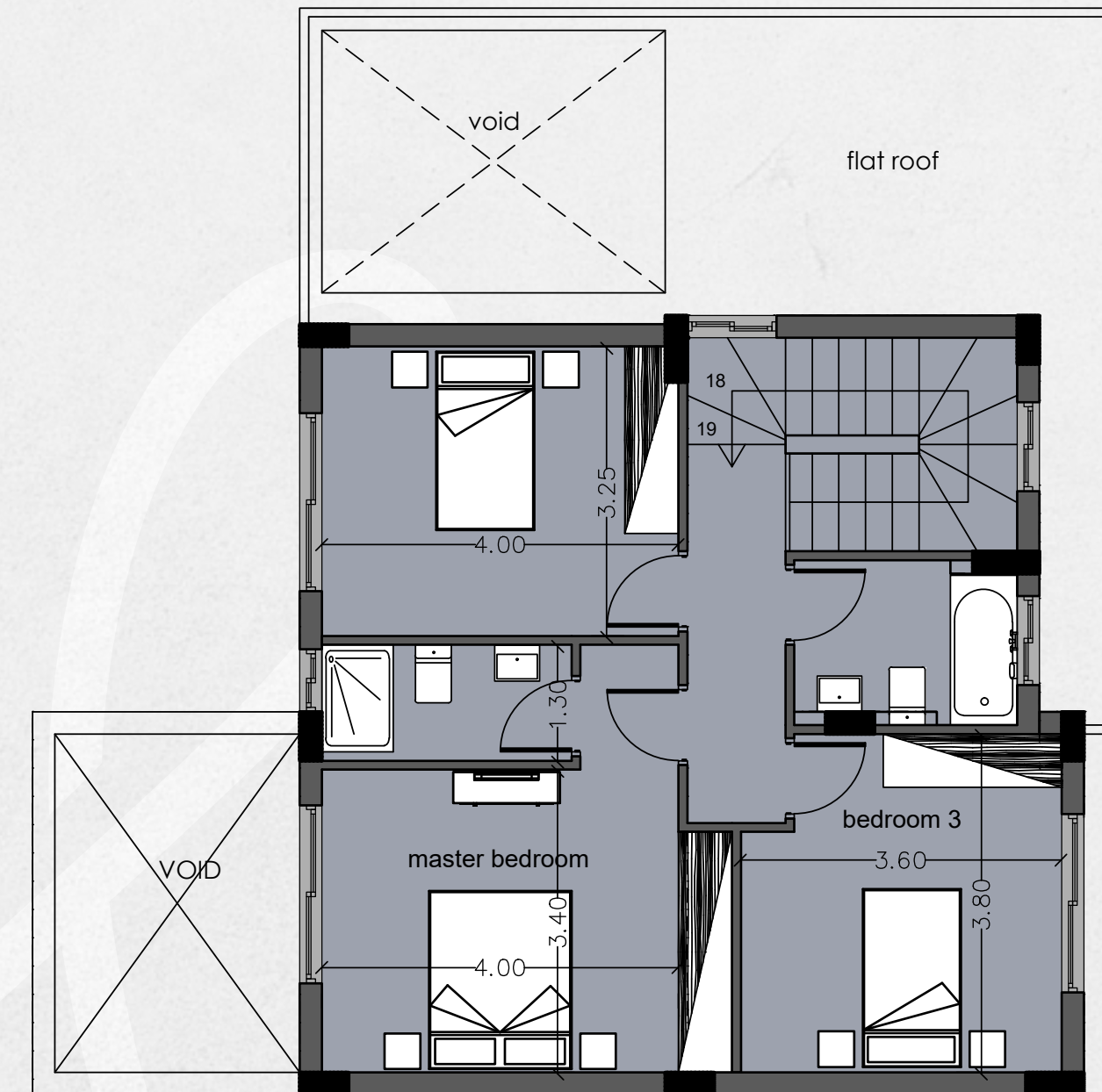
Ground Floor



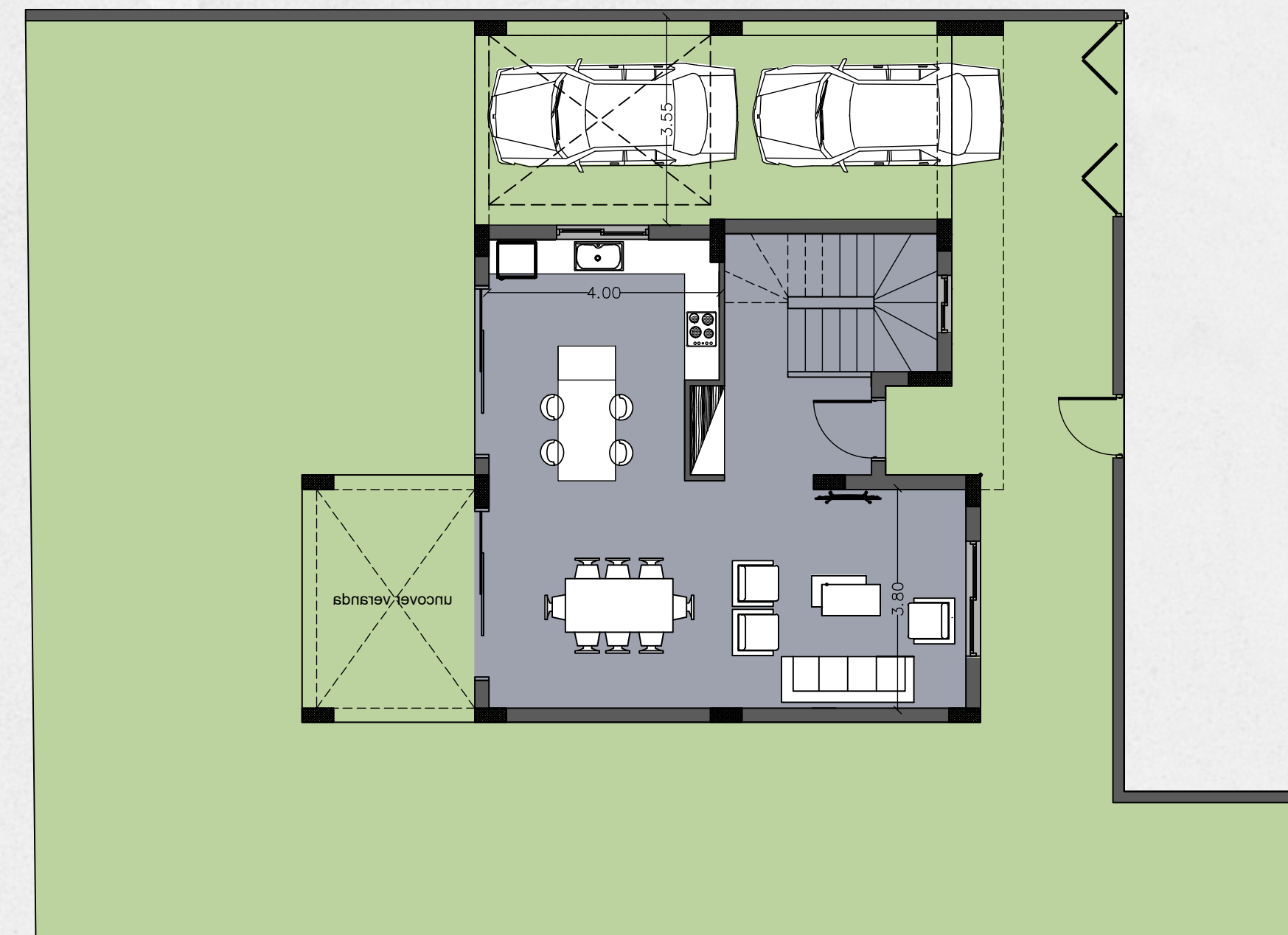
House Plan

VILLA 8

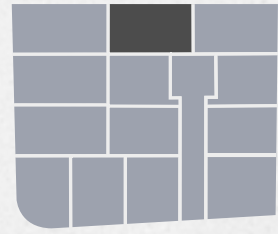
Plot Size	319m ²
Bedrooms	3
Bathrooms	2
Internal Covered Area	147m ²
Covered Veranda	-
Un-covered Veranda	12m ²
Covered Parking	16m ²
Swimming Pool	Optional
Total Covered Area	163m²



Upper Floor



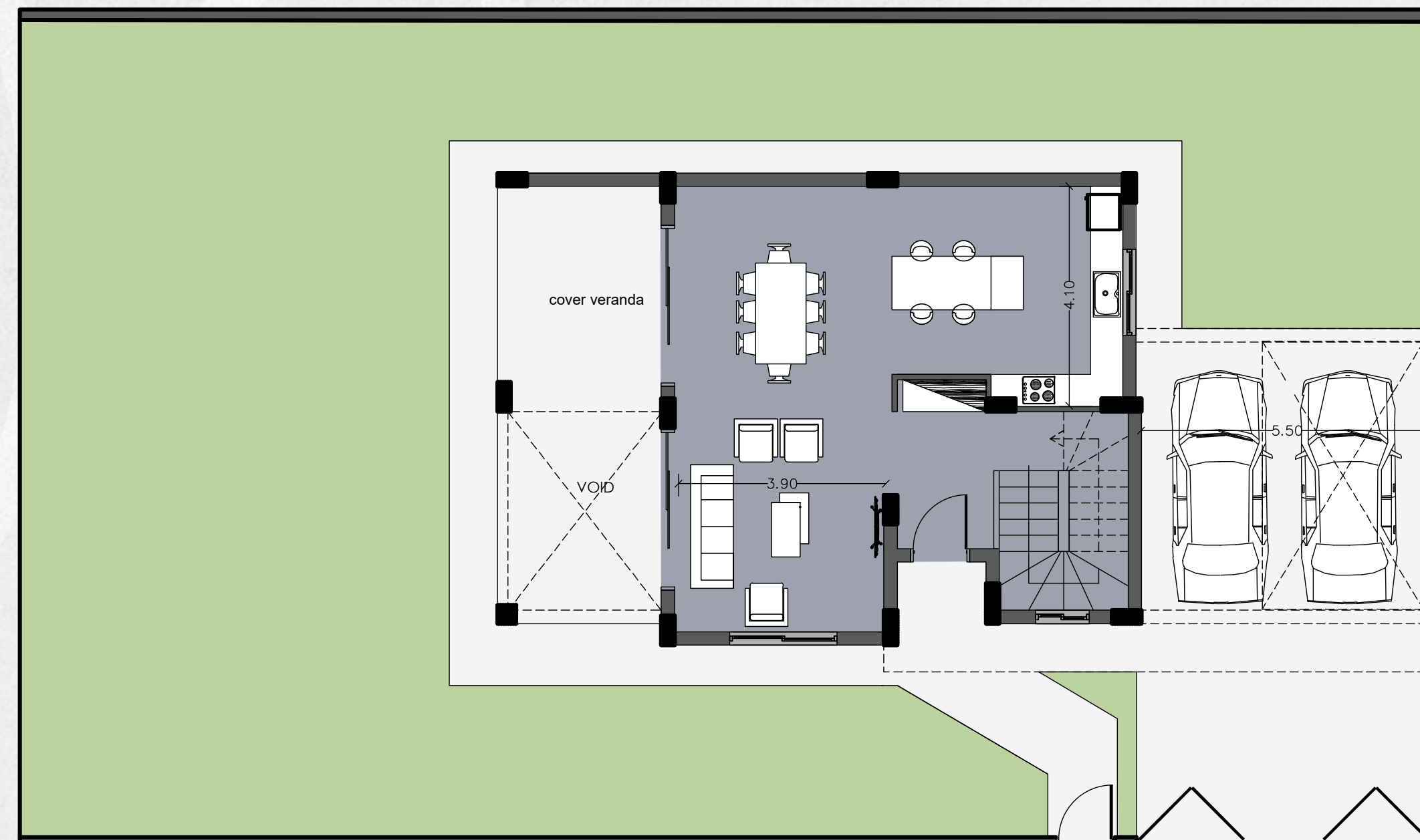
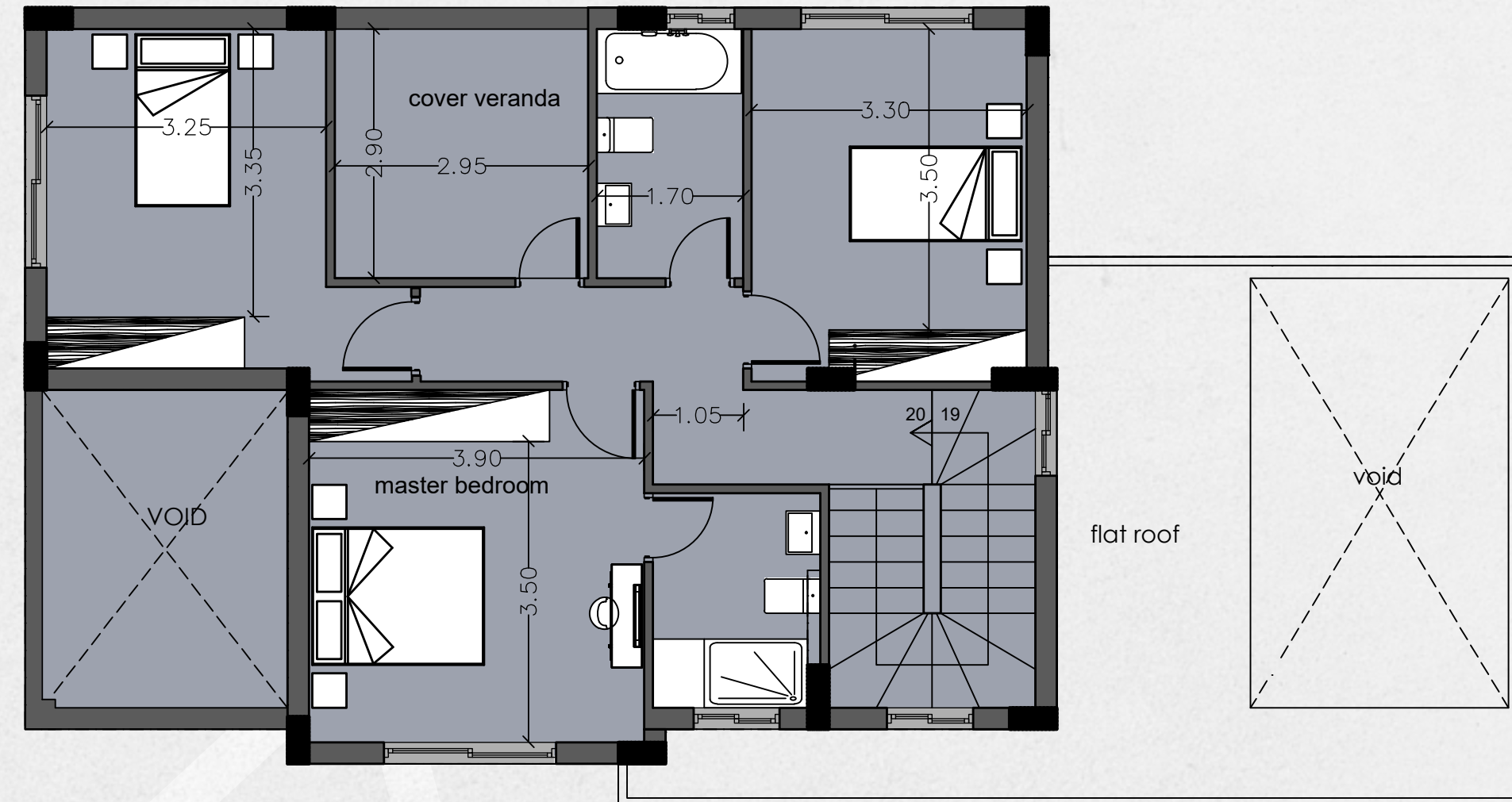
Ground Floor

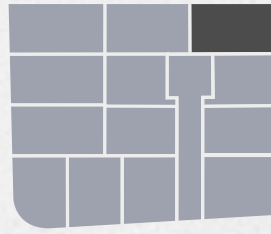


House Plan

VILLA 9

Plot Size	407m ²
Bedrooms	3+
Bathrooms	2
Internal Covered Area	155m ²
Covered Veranda	24m ²
Un-covered Veranda	12m ²
Covered Parking	15m ²
Swimming Pool	Optional
Total Covered Area	194m²

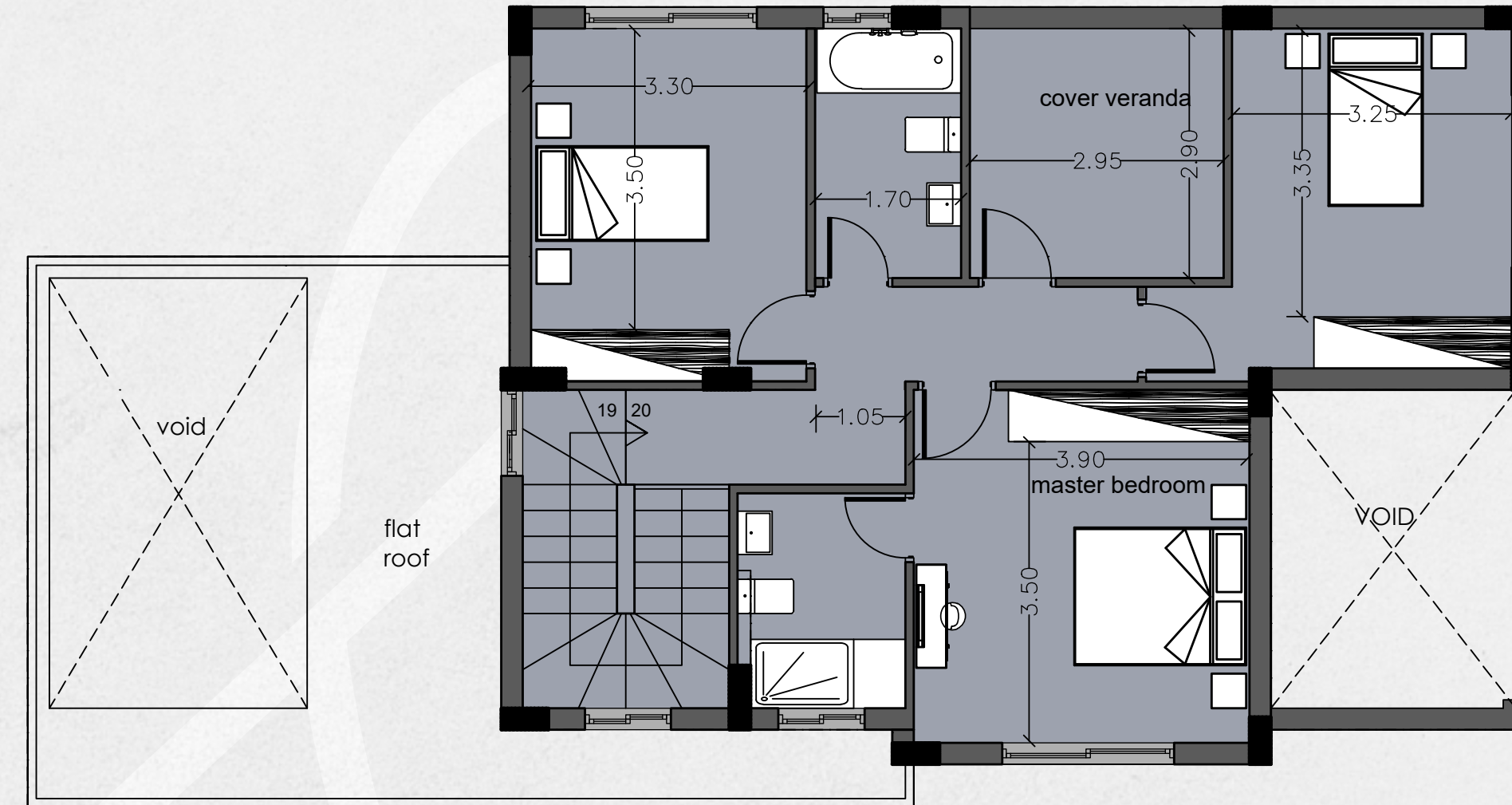




House Plan

VILLA 10

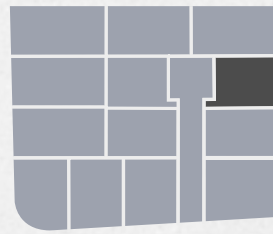
Plot Size	408m ²
Bedrooms	3+
Bathrooms	2
Internal Covered Area	155m ²
Covered Veranda	24m ²
Un-covered Veranda	12m ²
Covered Parking	15m ²
Swimming Pool	Yes
Total Covered Area	194m²



Upper Floor



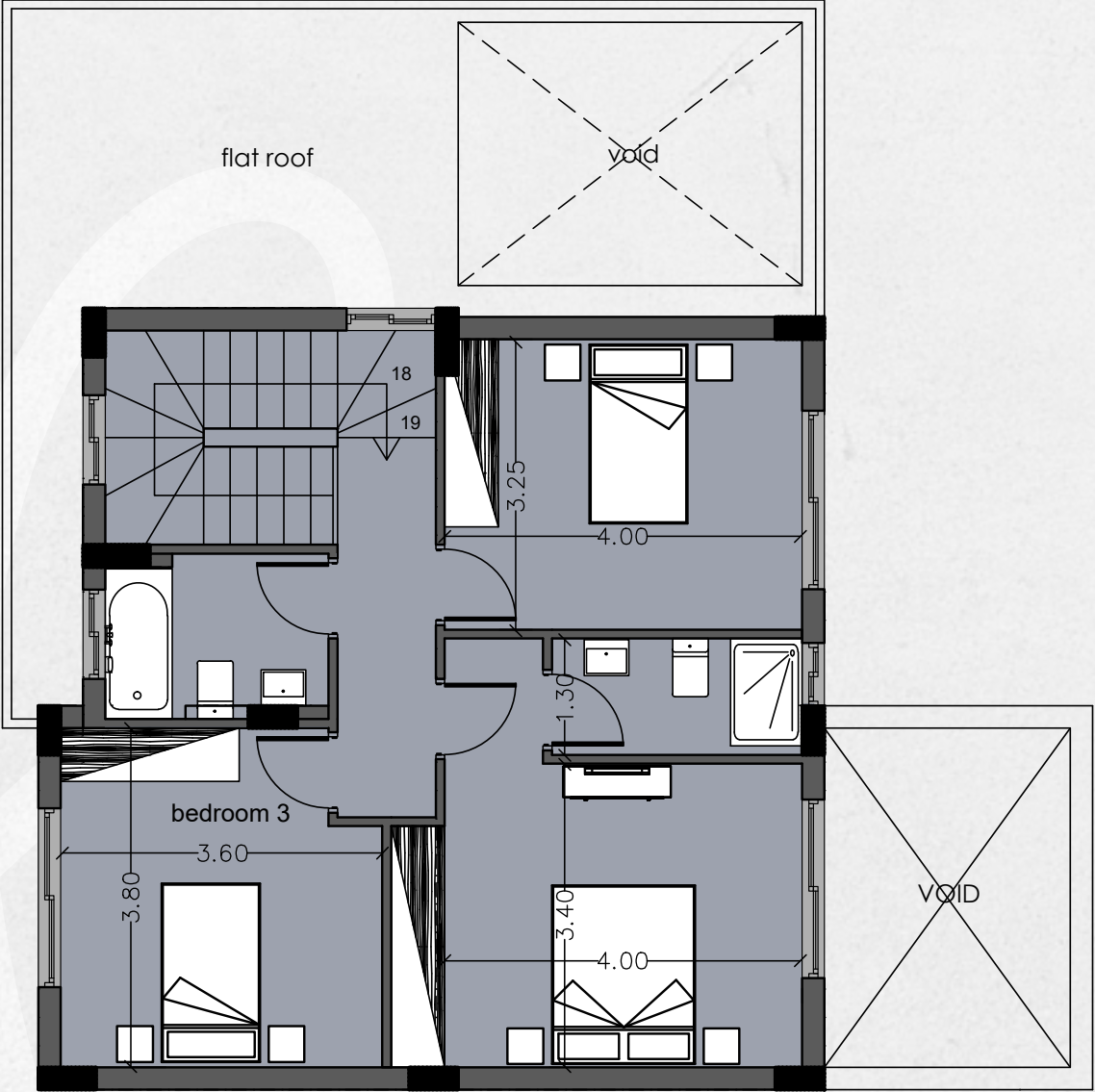
Ground Floor



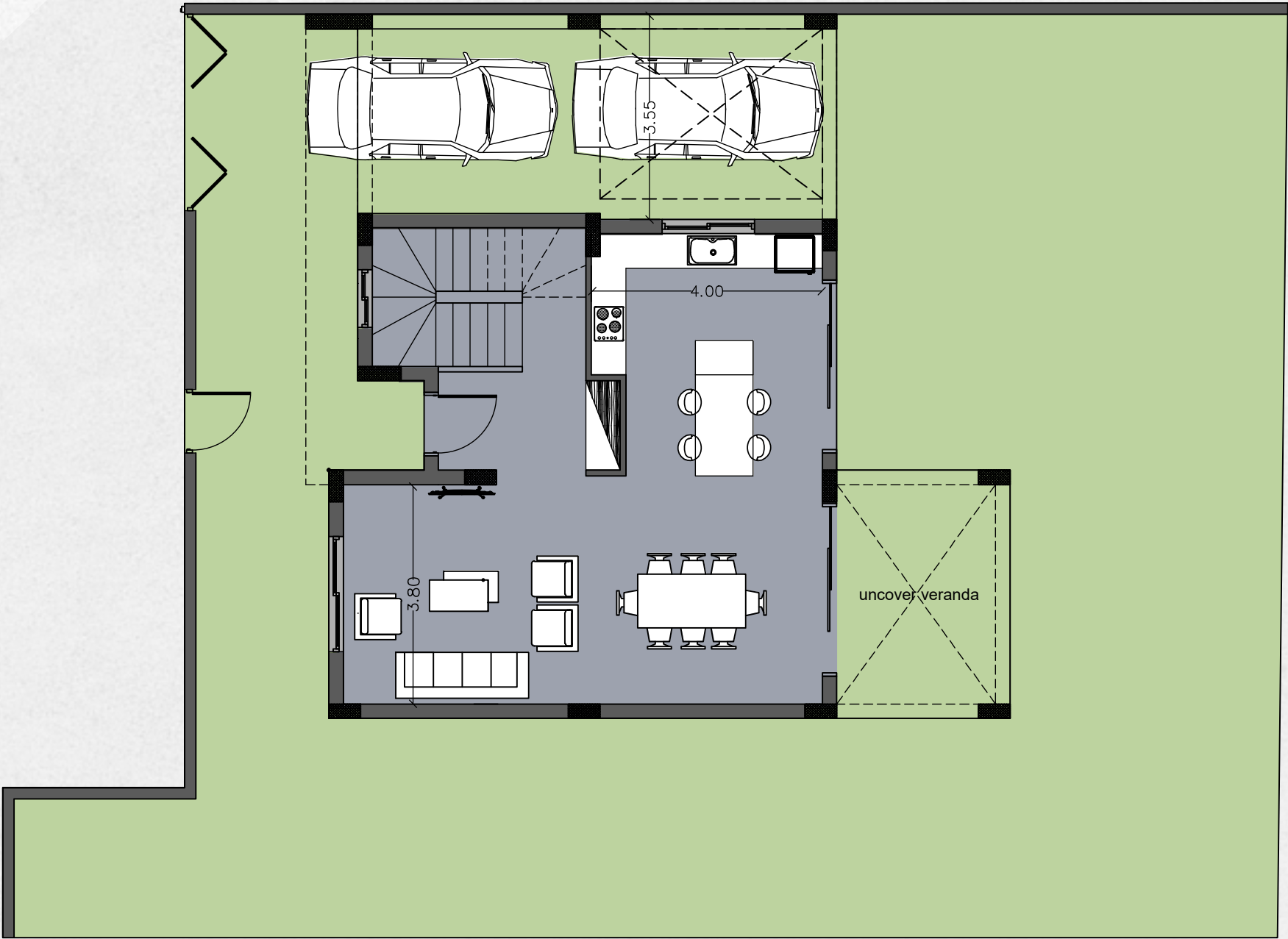
House Plan

VILLA 11

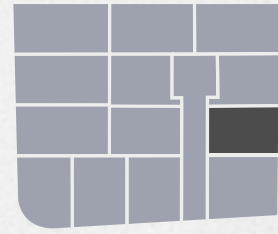
Plot Size	314m ²
Bedrooms	3
Bathrooms	2
Internal Covered Area	147m ²
Covered Veranda	-
Un-covered Veranda	12m ²
Covered Parking	16m ²
Swimming Pool	Optional
Total Covered Area	163m ²



Upper Floor



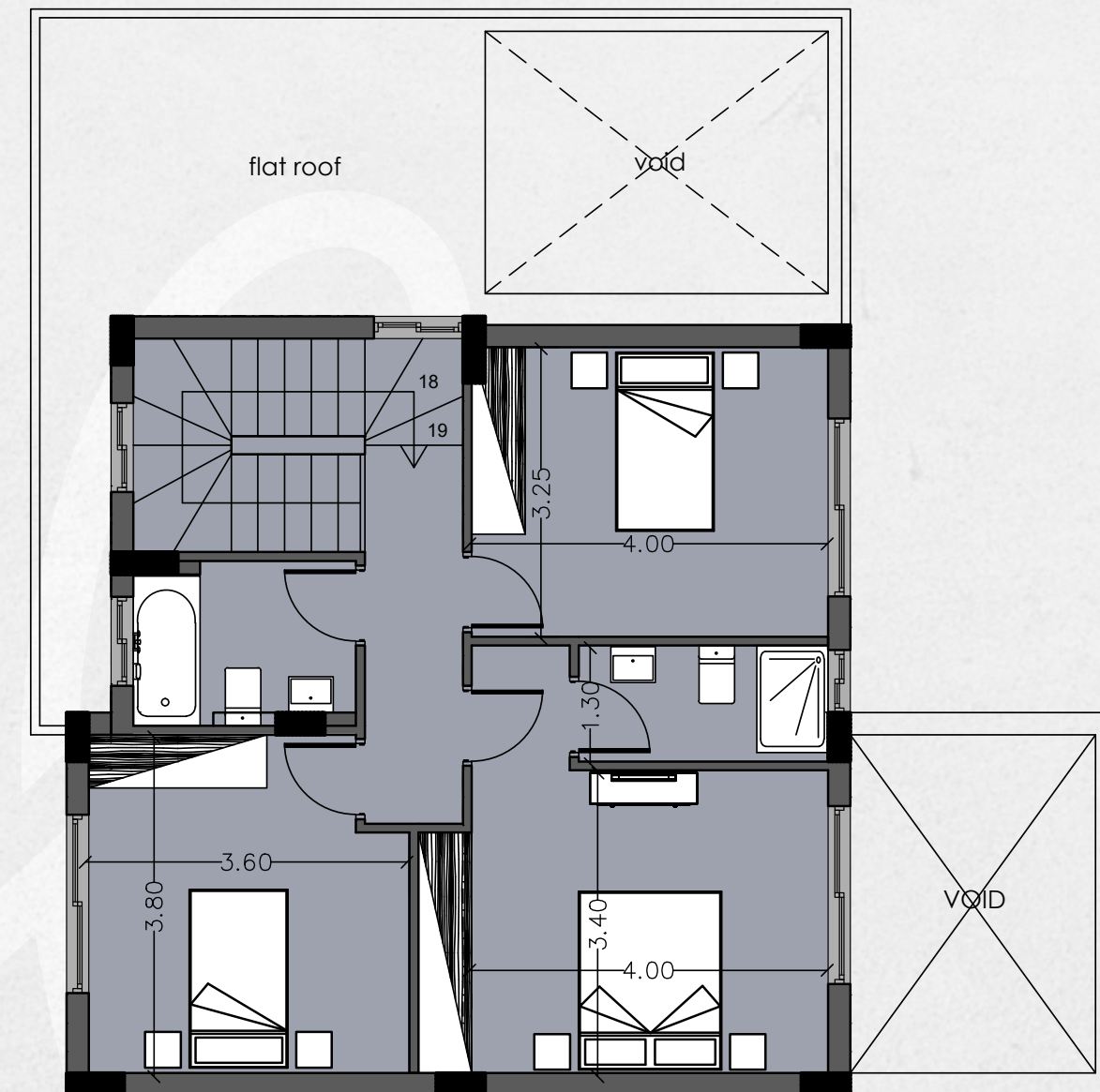
Ground Floor



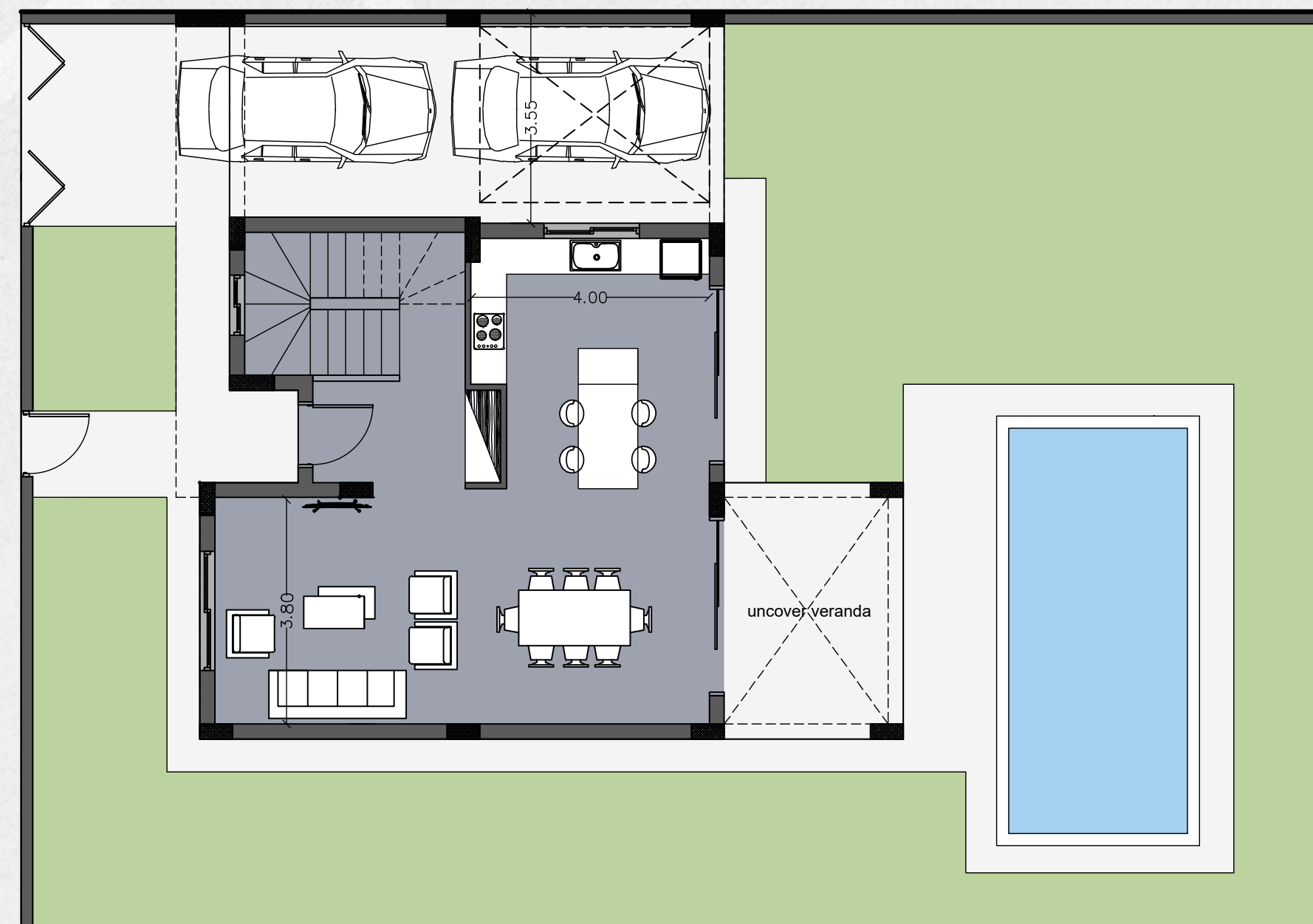
House Plan

VILLA 12

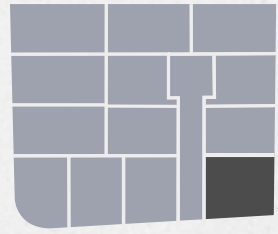
Plot Size	345m ²
Bedrooms	3
Bathrooms	2
Internal Covered Area	147m ²
Covered Veranda	-
Un-covered Veranda	12m ²
Covered Parking	16m ²
Swimming Pool	Yes
Total Covered Area	163m²



Upper Floor



Ground Floor



House Plan

VILLA 13

Plot Size	420m ²
Bedrooms	3
Bathrooms	2
Internal Covered Area	115m ²
Covered Veranda	-
Un-covered Veranda	16m ²
Covered Parking	-
Swimming Pool	Yes
Total Covered Area	115m²







STYLIANIDES GROUP

DEVELOPERS · CONTRACTORS · ARCHITECTS

☎ 7000 3004



www.stylianidesgroup.com



info@stylianidesgroup.com

QUALITY IS OUR HABIT!

Whilst all care has been taken, the information contained herein is for indicative purposes and a guide only and does not constitute an offer, warranty or contract. All computer generated-images and representations are indicative only. Changes may be made during the further planning or development stages; and thus, subject to change without notice. E & O.E.