

Palm II
— PENTHOUSES —

Palm II



A stunning new private estate of apartment residences, offering a modern and truly luxurious environment, located in the exclusive Columbia Area of Limassol, in the heart of Cyprus' most cosmopolitan destination.

Designed to feel part of the vibrant town centre but with the outmost privacy in mind, Palm II offers a truly contemporary environment, surrounded by serene landscaped gardens, relaxation areas and outdoor swimming pool.

STYLE
AND
TASTE





LIMASSOL

AN IDEAL PLACE TO LIVE, WORK, INVEST

Limassol gives you the time and the freedom to enjoy life at a slower pace within a truly welcoming environment. Small enough to ensure that a new experience are always close by, but large enough to provide attractions for all ages and lifestyle.

Limassol offers every pleasure under the sun. Stretch out on the beach, swim in crystal-clear waters, wander unspoilt nature trails, explore awe-inspiring ancient landmarks.





SPECIFICATIONS AND AMENITIES

The approach for Palm II is meticulous and measured, to reach the level of quality our apartments deserve and residents expect. Every last detail of the Palm II has been designed with the utmost care and attention to detail.

- 
- Covered secured Parking
 - Pipe in Pipe plumbing System
 - Pressurized Water System / Solar Panel Water Heating
 - Custom Designed Kitchens & Wardrobes / Granite Worktops
 - Sanitary Ware (Roca) / Mixers & taps (Grohe)
 - Private Storeroom
 - Travertine or porcelain flooring
 - Fly Screens on Windows & Patio Doors
 - Overflow outdoor Swimming Pool
 - Luxury entrance Lobby
 - Gated Secured Complex
 - Security Door / CCTV for all Common Areas
 - Video Phone Entry System
 - Video Phone Entry System
 - Fully Landscaped Garden areas
 - Decorative Architectural LED lighting for Common Areas
 - Decorative Architectural LED lighting for Common Areas
 - Thermal Insulation throughout (extruded polystyrene)





STYLISH LIVING

All apartment residences are built to the highest standards; incorporate the finest materials, and offer additional leisure and lifestyle amenities that make the Palm II a remarkable place to live.







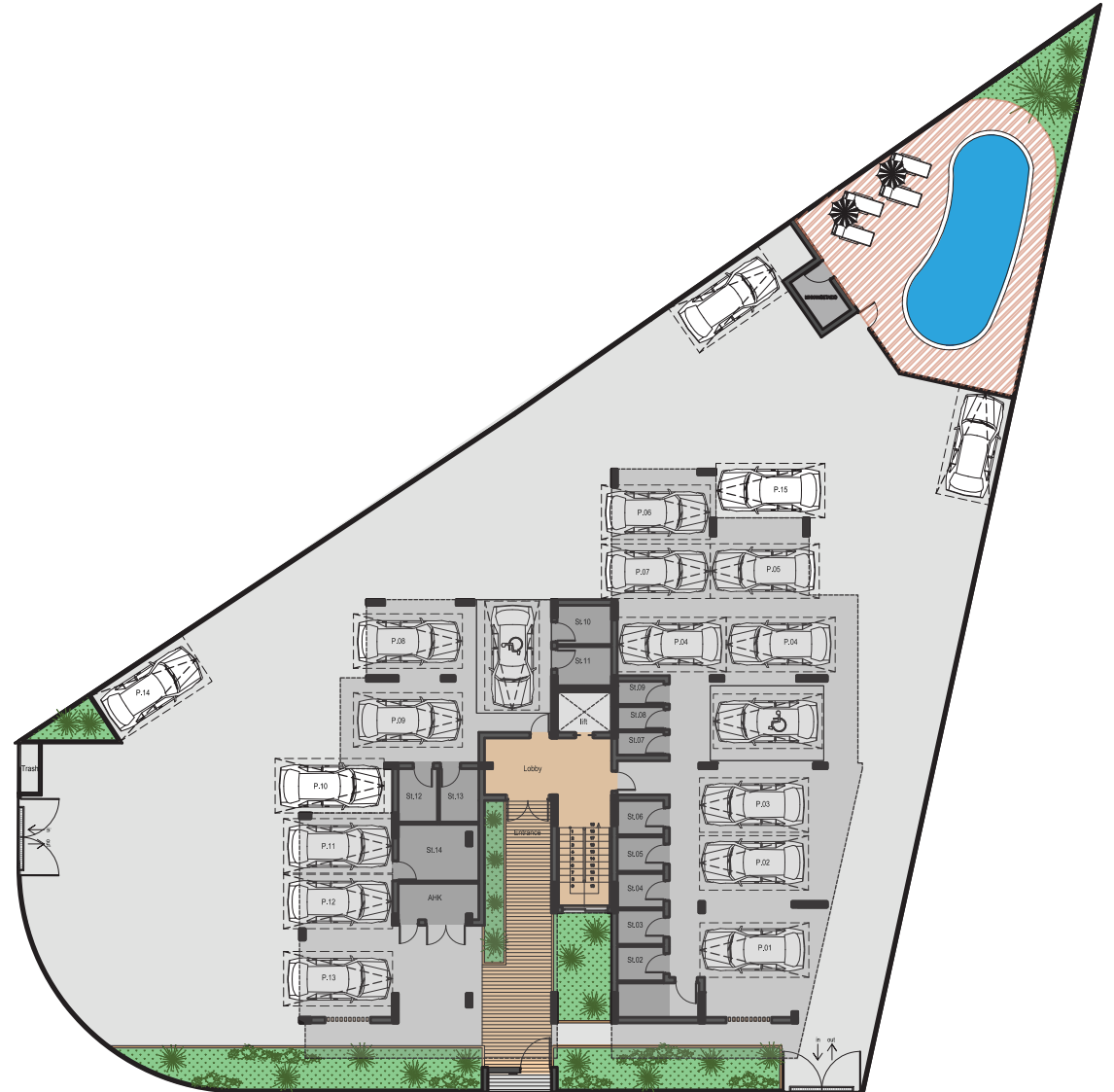




THE PLANS



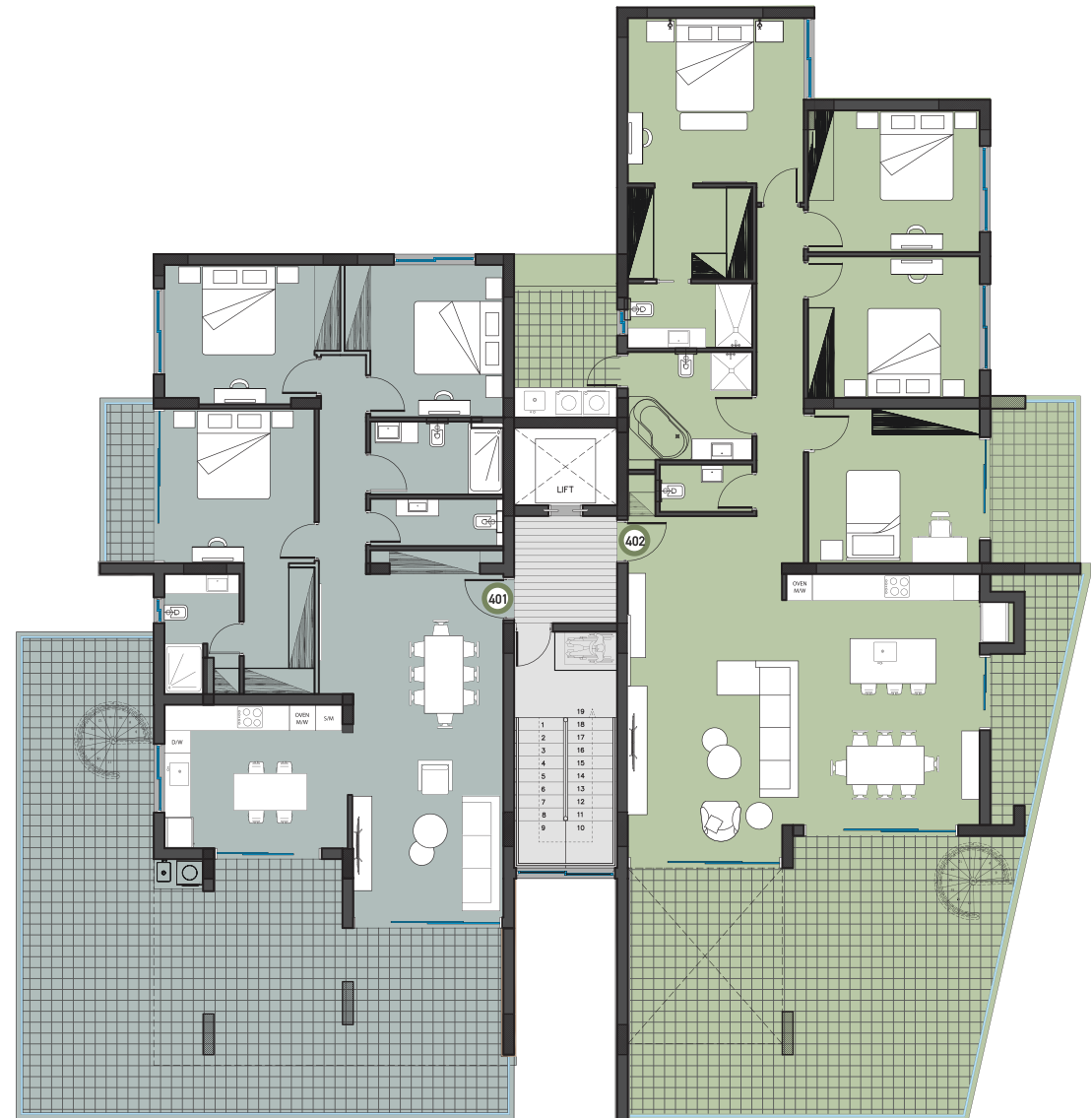
GROUND FLOOR





PENTHOUSE FLOOR

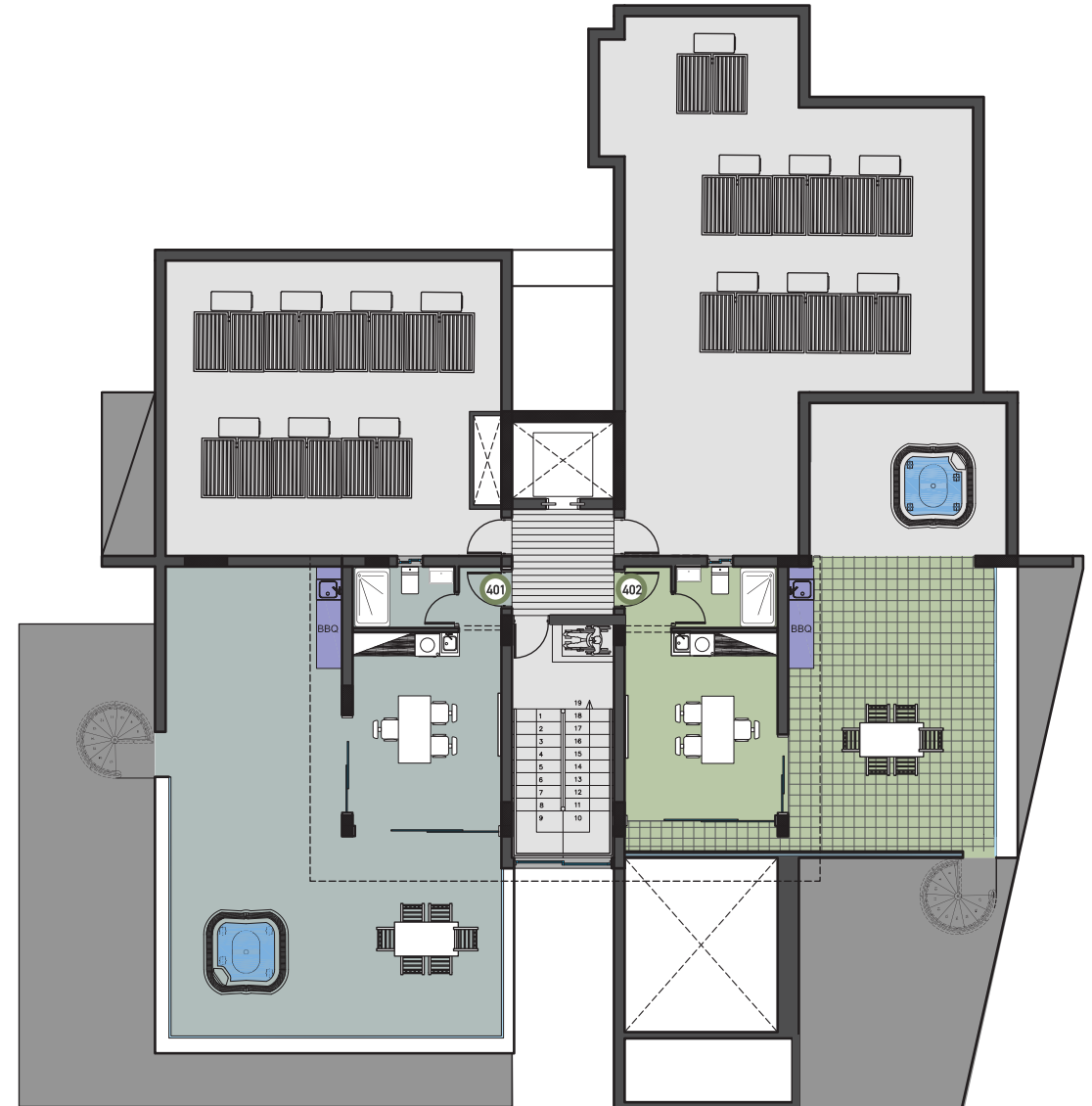
APARTMENT NO.	401	402
BEDROOMS	3+1	4+1
COVERED INDOOR AREA	149m ²	186m ²
COVERED VERANDA AREA	33m ²	25m ²
STORE ROOM AREA	8.5m ²	8m ²
COMMON AREA	10m ²	10m ²
UN-COVERED ROOF TERRACE / VERANDA	112m ²	106m ²
TOTAL COVERED AREA	200.5m²	229m²





PENTHOUSE ROOF TERRACES

APARTMENT NO.	401	402
BEDROOMS	3+1	4+1
COVERED INDOOR AREA	149m ²	186m ²
COVERED VERANDA AREA	33m ²	25m ²
STORE ROOM AREA	8.5m ²	8m ²
COMMON AREA	10m ²	10m ²
UN-COVERED ROOF TERRACE	112m ²	106m ²
TOTAL COVERED AREA	200.5m²	229m²

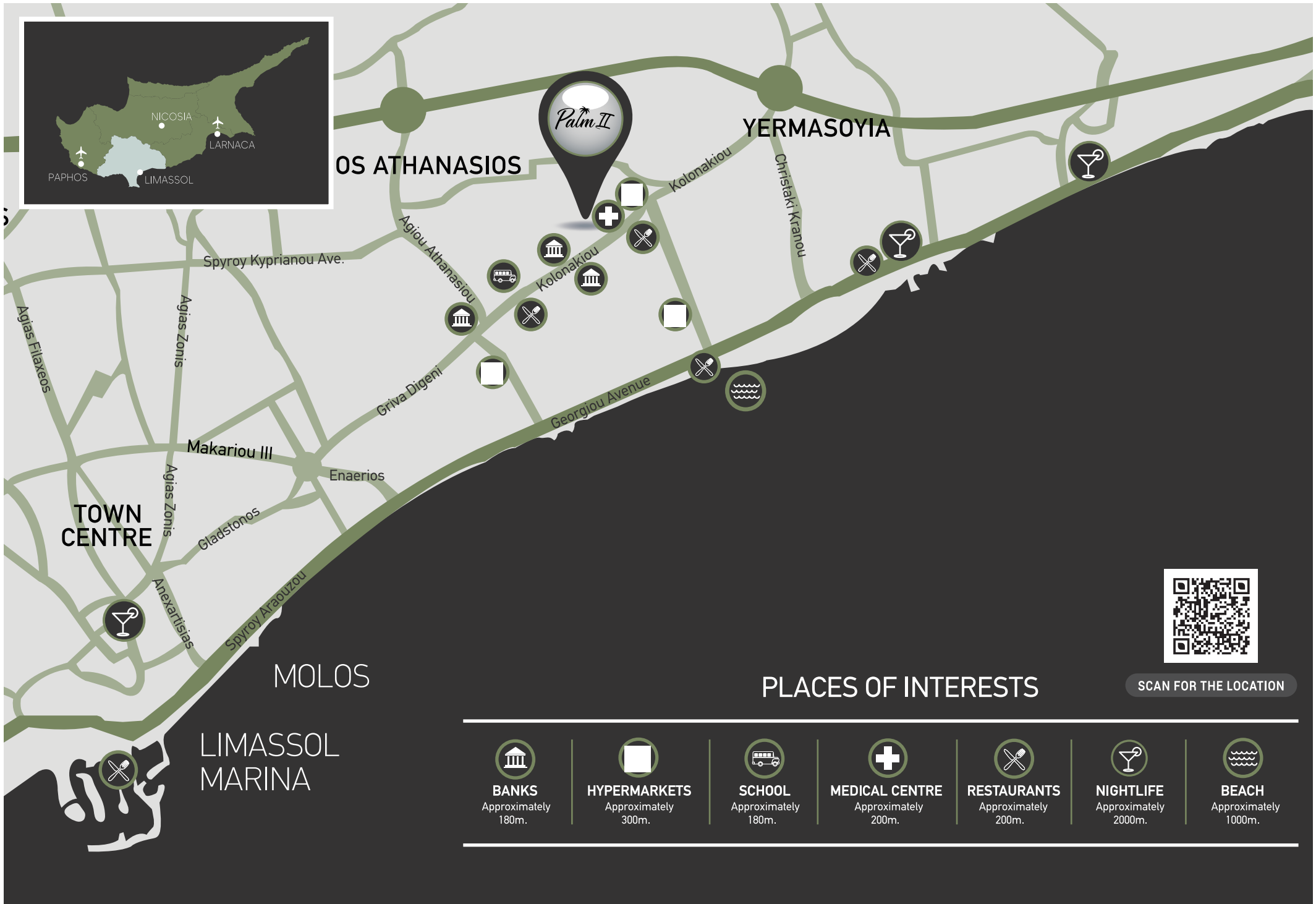




Palm II

LOCATION

Palm II is situated in the privileged Columbia area, in the heart of Limassol, and boasts close proximity to all kinds of amenities: shops, restaurants, cafés and is walking distance to the Limassol seafront. Designed for people to work, live and relax, this exceptional location gives residents and their guests the complete Limassol experience in the centre of the city.



SCAN FOR THE LOCATION

PLACES OF INTERESTS

						
BANKS	HYPERMARKETS	SCHOOL	MEDICAL CENTRE	RESTAURANTS	NIGHTLIFE	BEACH
Approximately 180m.	Approximately 300m.	Approximately 180m.	Approximately 200m.	Approximately 200m.	Approximately 2000m.	Approximately 1000m.



STYLIANIDES
— GROUP —

QUALITY IS OUR HABIT!

Palm II
— PENTHOUSES —

Whilst all care has been taken, the information contained herein is for indicative purposes and a guide only and does not constitute an offer, warranty or contract. All computer generated images and representations are indicative only. Changes may be made during the further planning or development stages, and thus subject to change without notice. E & O.E.

T: 7000 3004
F: +357 25389755

E: info@stylianidesgroup.com
www.stylianidesgroup.com